

ON THE
CLOCK WITH



DEVILISH INTENTIONS

DIRECTED BY SUMMER PURKS



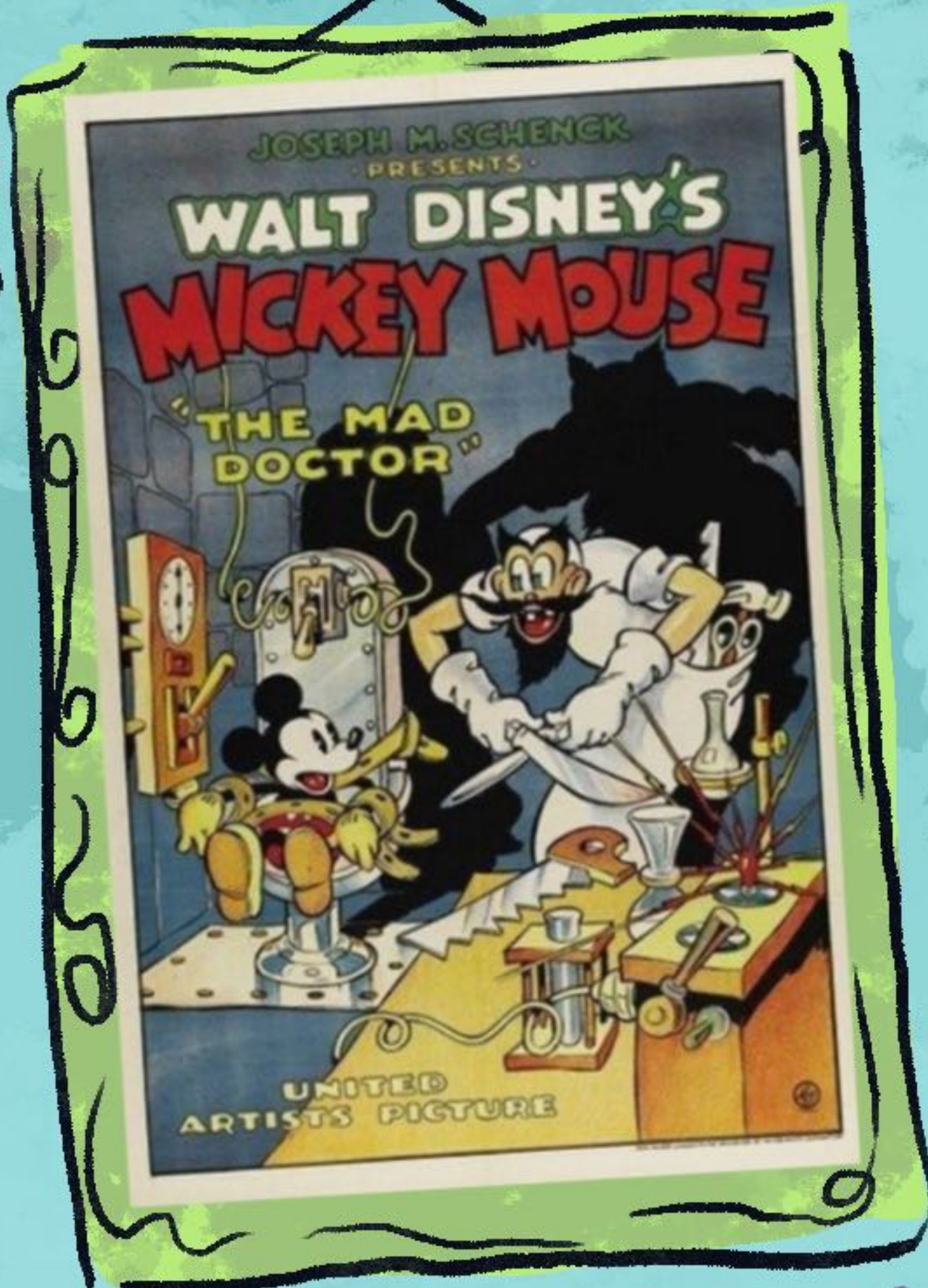


KEY ART BY LAUREN BEST

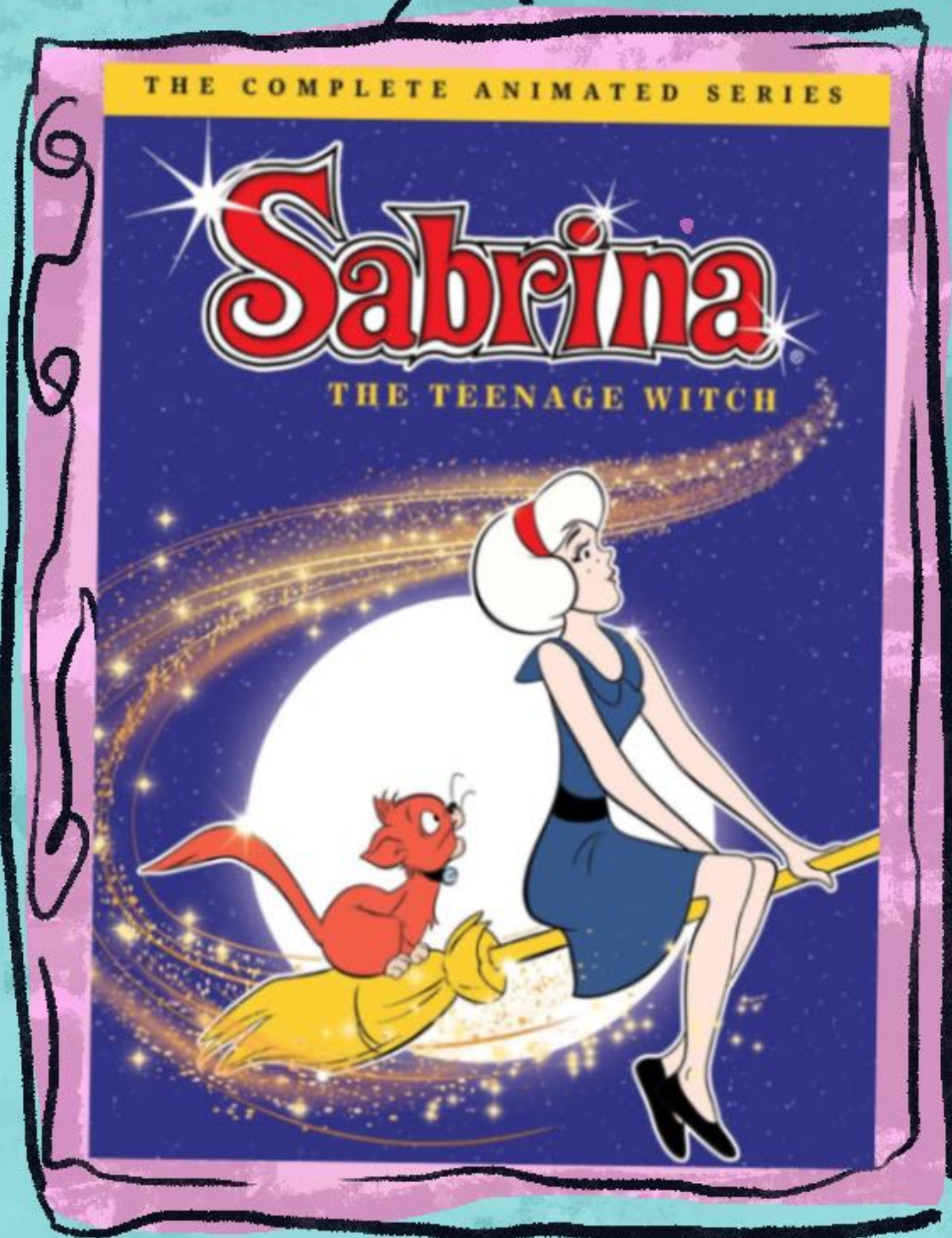
TOPE: PLAYFUL, CAMPY, COMEDIC



MONSTER HIGH
WEBISODES



MICKEY MOUSE
CARTOONS



SABRINA THE
TEENAGE WITCH

TONE CONT.

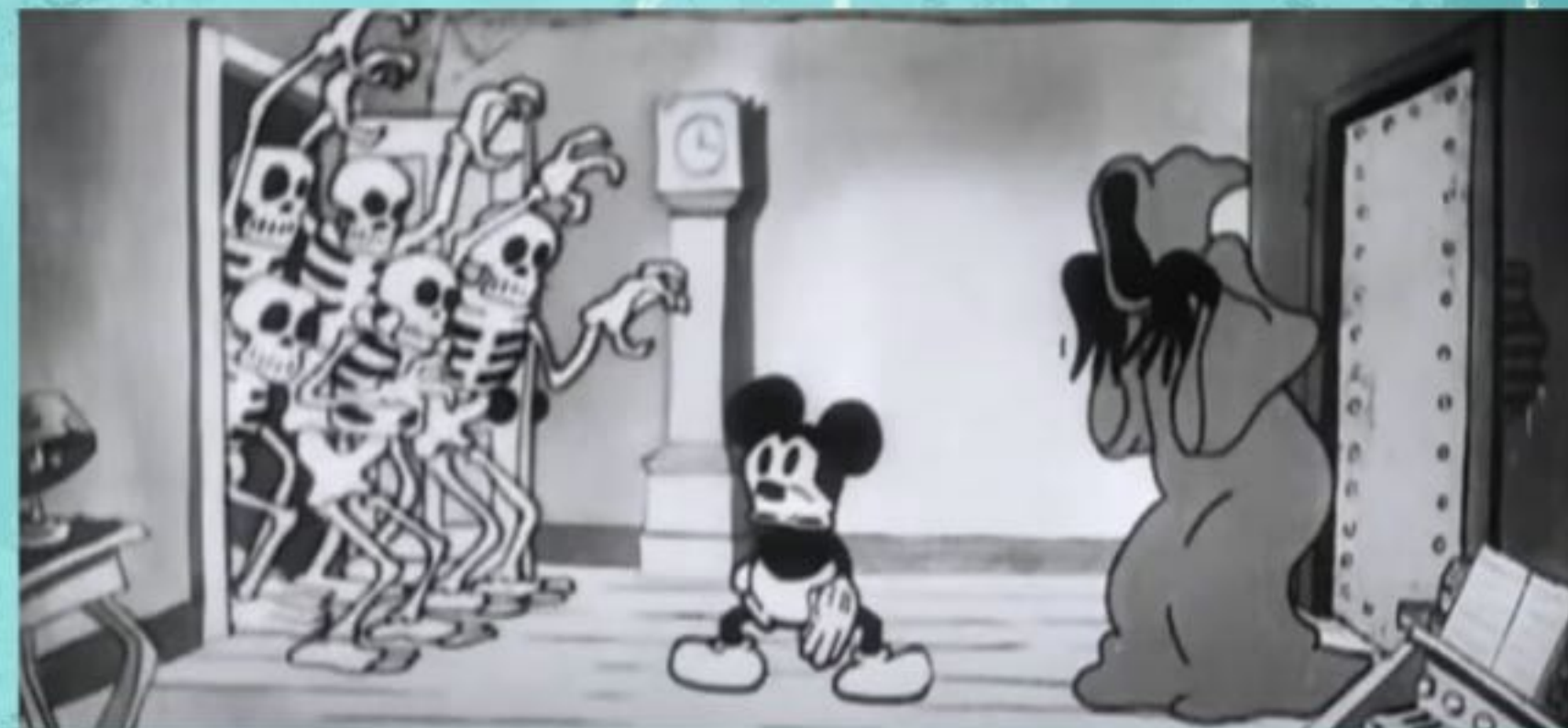


MONSTER HIGH WEBSISODES:

BITE SIZED STORIES WHERE TEEN MONSTERS NAVIGATE HIGH SCHOOL. WHAT MONSTER THEY ARE MOTIVATES THEIR CHARACTER & COMEDY.

SABRINA THE TEENAGE WITCH:

PLAYFUL & SELF AWARE, SABRINA USES HER WITCHY POWERS TO LEARN LESSONS OF COMING INTO HER OWN.



VINTAGE MICKEY: QUICK PACED & EMPHASIS ON PHYSICAL GAGS, MOTIVATED BY QUIRKY VISUALS

VISUAL STYLE

BRIGHT
COLOR
QUALITY

DOIL-LIKE MODELS

(HI GIRLS :P)



HAND-PAINTED
TEXTURES
WITH STOP
MOTION INSPO

STYZIED
PROPORTIONS

MEET THE
GIRLS



AD
FANG

- LEO, 18, 5'2
- SPECIES: DEMON
- A HOT HEADED
BRATTY TEEN →
ALWAYS ON HER PHONE,
SHORT WITH CUSTOMERS,
A REGULAR TROUBLE
MAKER!!



CHARACTER CONSTRUCTION



REQUIRED WORK
UNIFORM: VEST
& SOLID COLOR
BOTTOMS



↳ DOLL-LIKE MODEL
& BUILD

BIG STOMPERS
WITH BUCKLES

FANG TURNAROUND

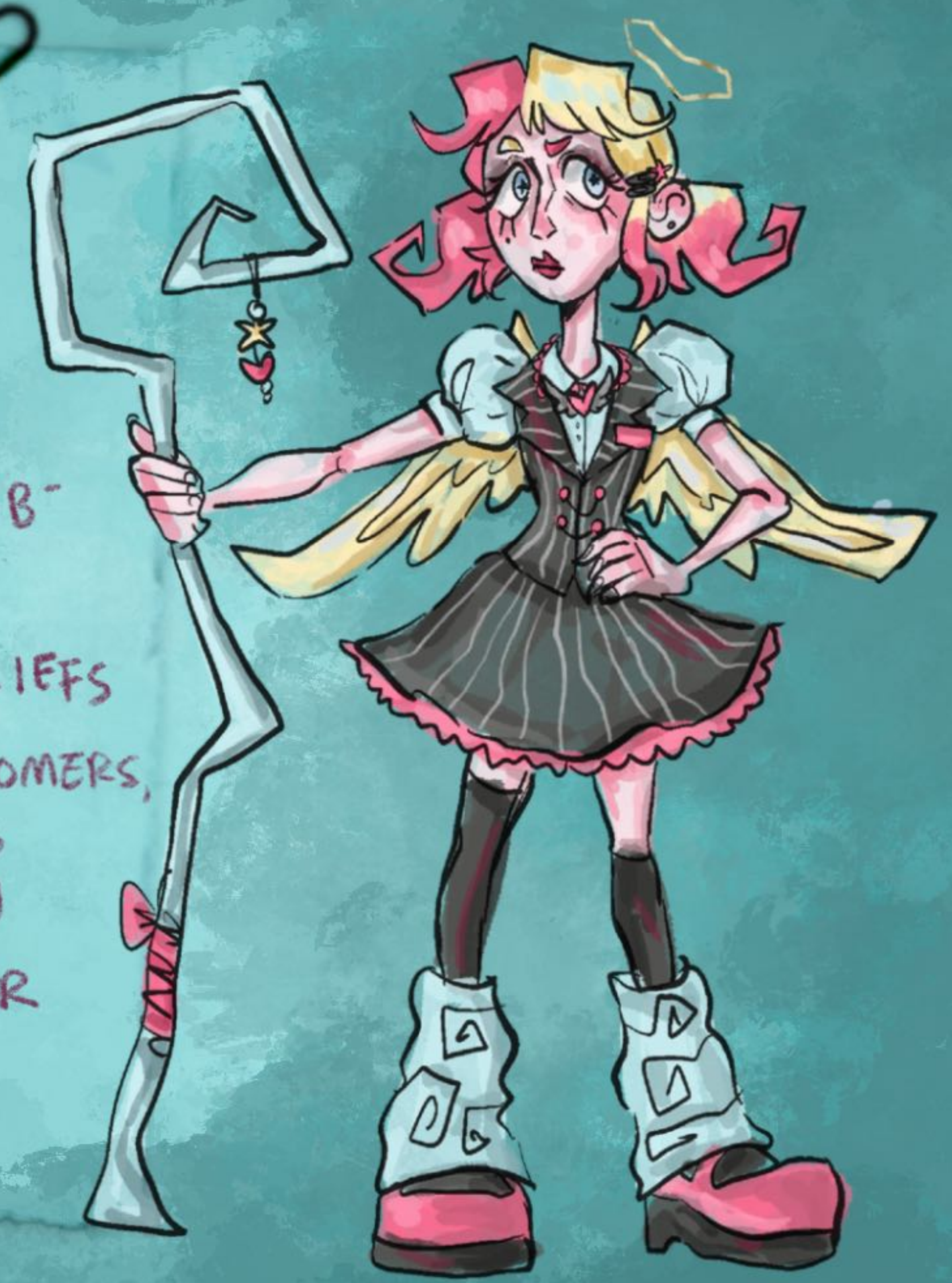
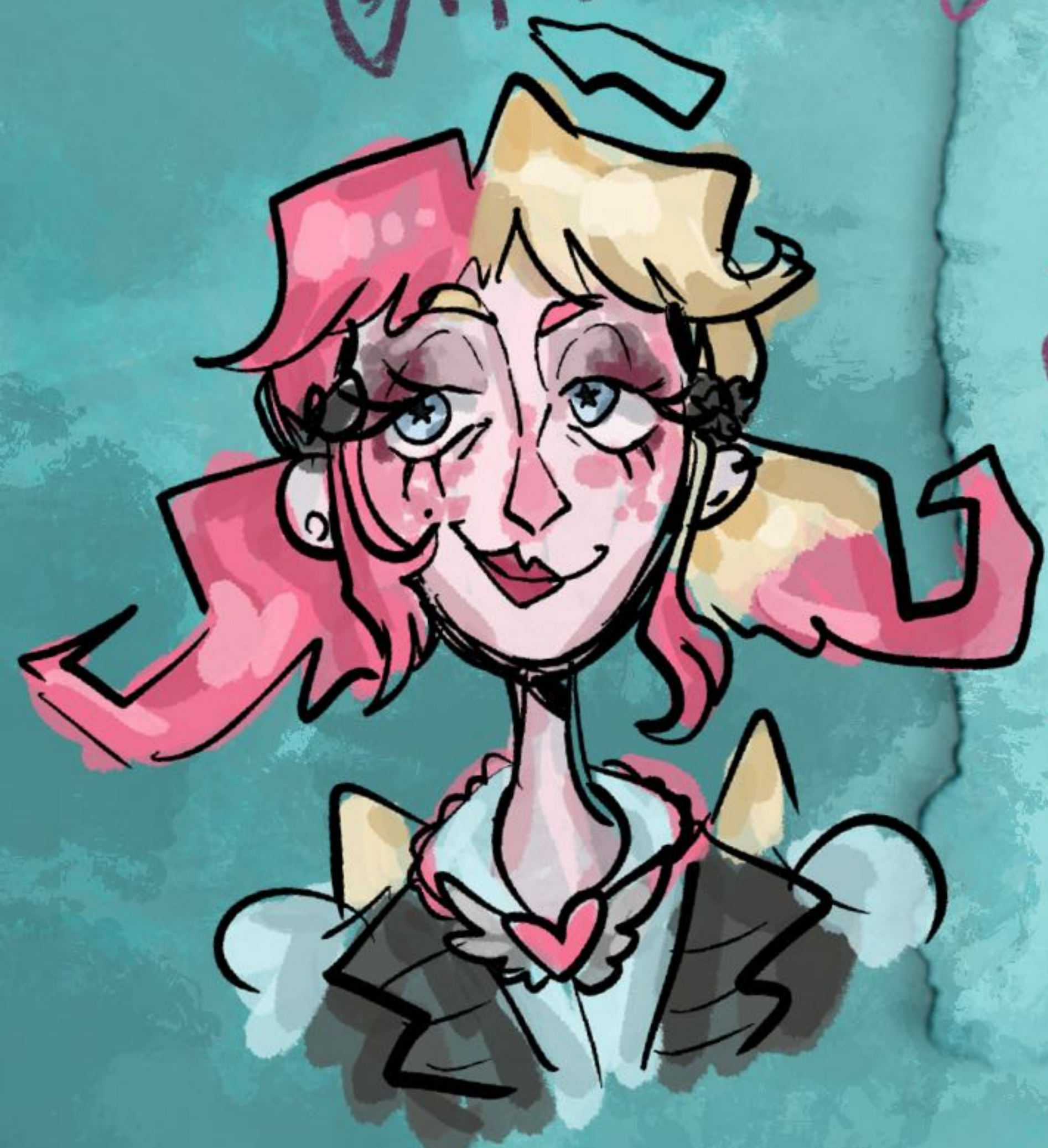
xoxo



MEET THE
GIRLS

SKY

- CAPRICORN, 18, 5'5
- SPECIES: CHERUB
- A LEVEL-HEADED STUB-BORN TEEN WITH INTENSE MORAL BELIEFS
- EXCITABLE WITH CUSTOMERS, ANAL ABOUT KEEPING THE SHOP CLEAN, AN OUTSPOKEN WORKER



CHARACTER CONSTRUCTION



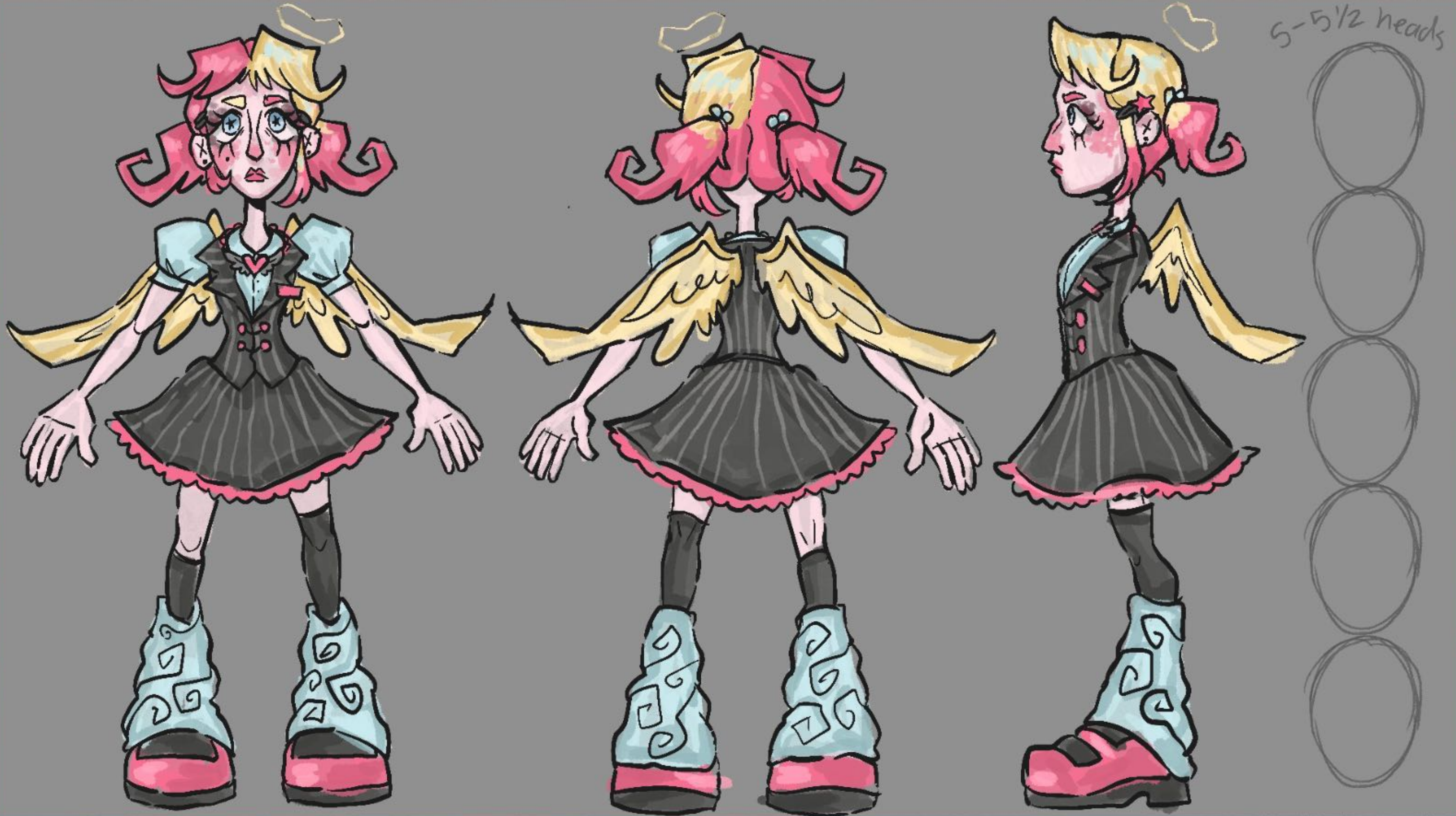
SAME VEST AS
FANG - WORK
UNIFORM

PLATFORM
MARY JANES ↓



DOLL REF:
EVER AFTER
HIGH → CA
CUPID

JKY TURNAROUND



PROP INSPO



DOLL FURNITURE ↓



↳ WITH WONKY SHAPE LANGUAGE



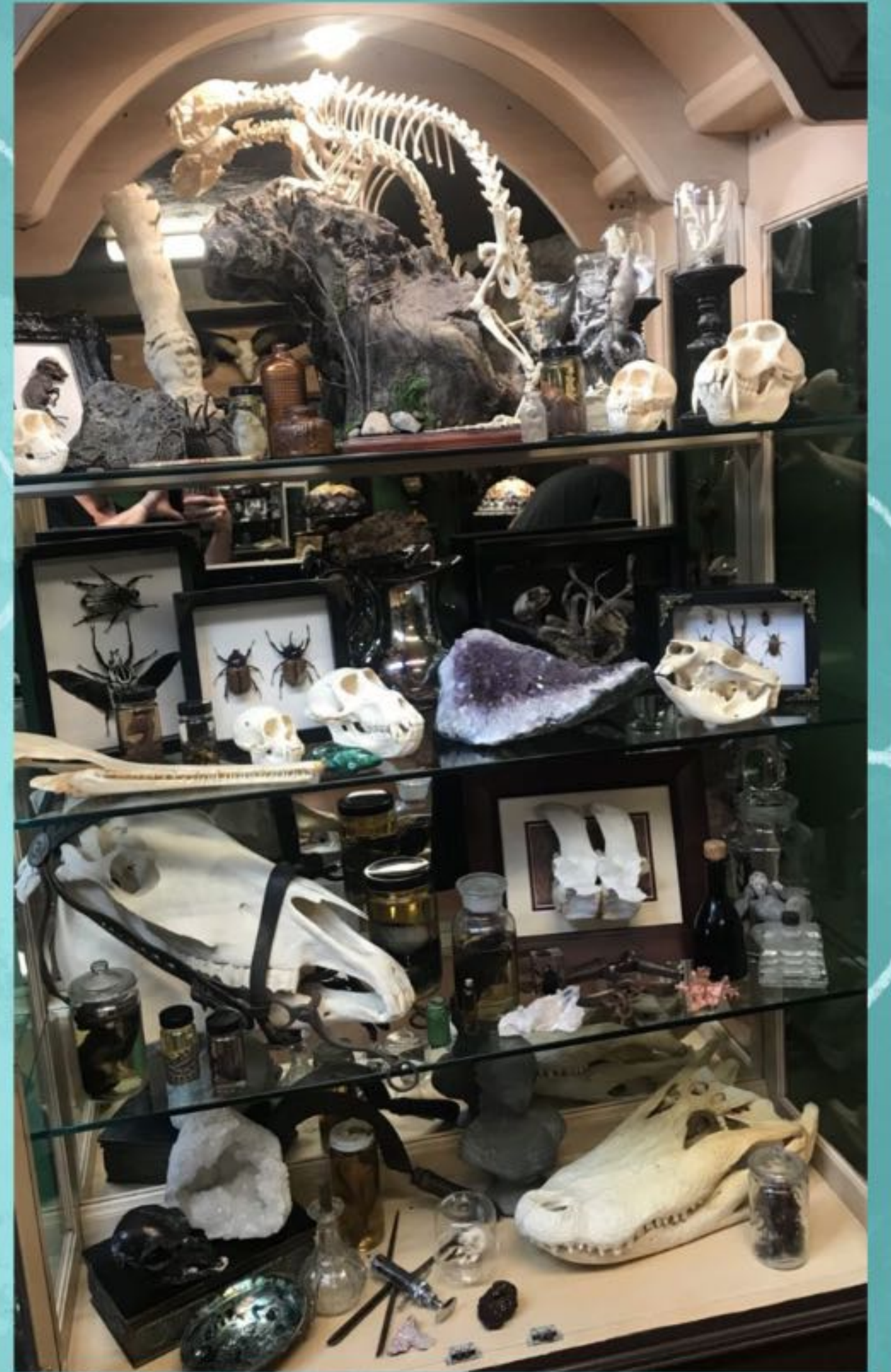
EMPHASIS ON CURVES



WANT THE ↑ PROPS TO FEEL LIKE THEY WOULD COME IN A PLAYSET WITH THE GIRLS

THE STORE: ODDITIES & ANTIQUES

- SUBVERTING THE IDEA OF A TRADITIONAL 'ODDITY' → I LIKE THE IDEA OF THE STORE BEING A BLEND OF A TWISTED TOY STORE & A MORE CONVENTIONAL ANTIQUE SHOP



↑ TWISTED TOYS

← MORE 'CONVENTIONAL' ↑

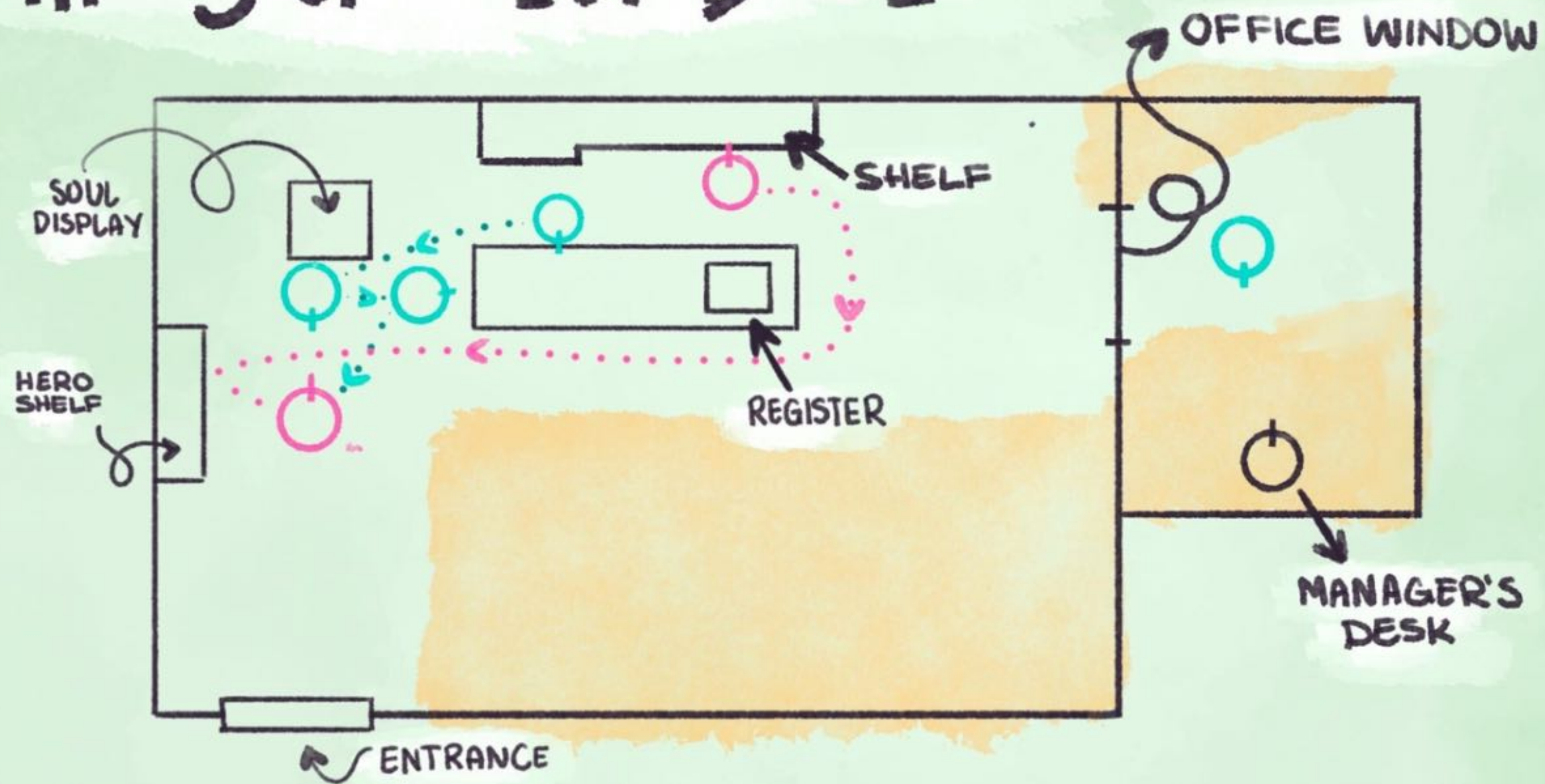
THE STORE: THE COUNTER



THE STORE: ENVIRONMENT



THE STORE: TOP DOWN



⊕ FANG

⊕ SKY

● UNSEEN

☆ NOT TO SCALE

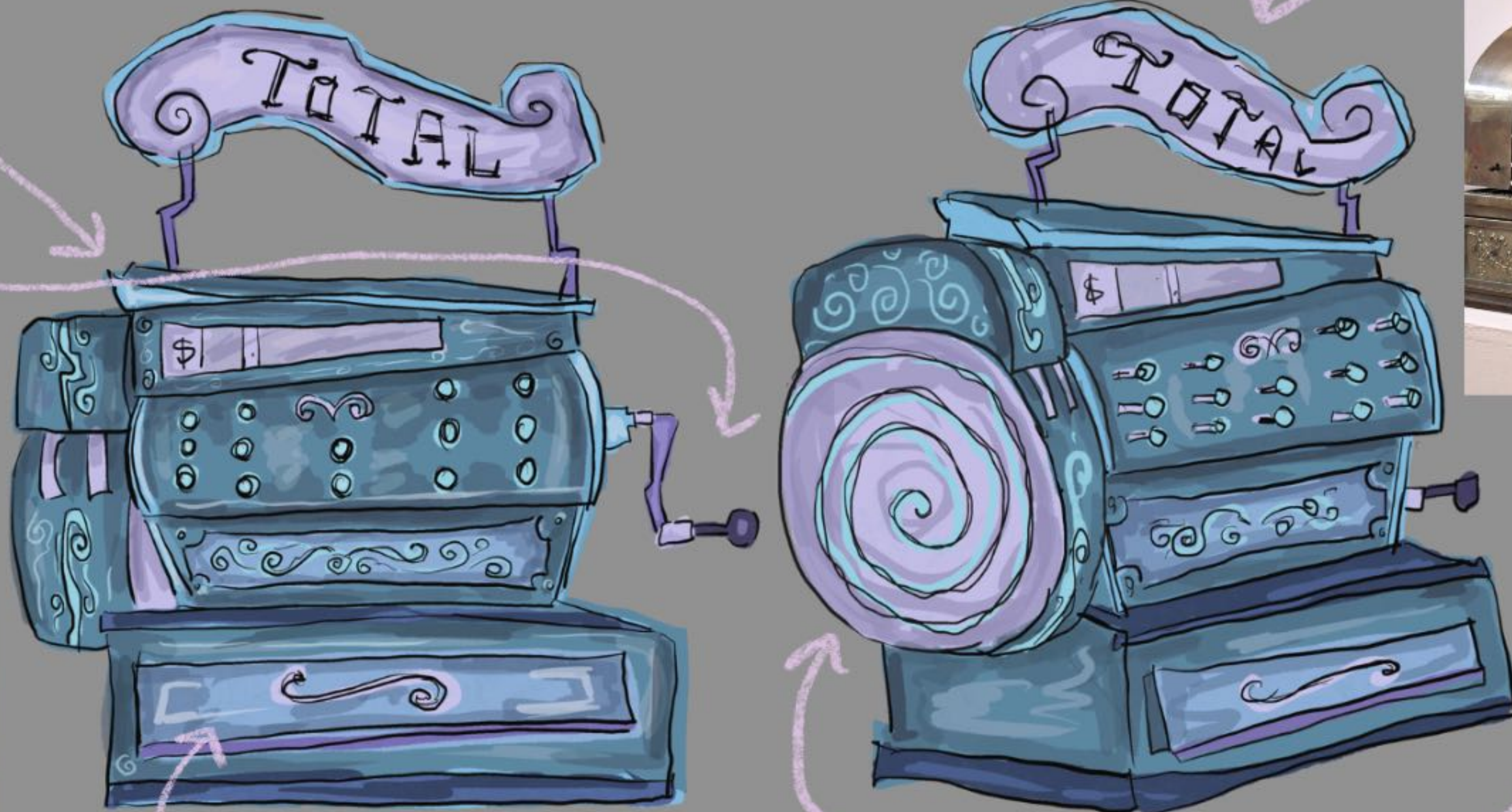
HERO PROP: THE ITEM THAT BREAKS "LA LUZ MALA"



- PROLIFIC MYTH IN ARGENTINE & URUGUAYAN HISTORY
- LITERALLY TRANSLATED AS 'EVIL LIGHT', THE PHENOMENON TAKES THE FORM OF WIL-O'-THE-WISP, ATMOSPHERIC GHOST LIGHT
- LEGEND HAS IT THAT THE LIGHT IS A SOUL, CONFINED TO A SPHERE, THAT WASN'T BAPTIZED/ IS MISSING SOMETHING.

- FANG WANTS THE SOUL FOR SELFISH REASONS, SHE LIKES THE IDEA OF HAVING OWNERSHIP OF SOMEONE'S BEING
- SKY WANTS TO PRESERVE THE SOUL, SHE WANTS TO PROTECT IT & KNOWS FANG HAS NO BUSINESS WITH IT.

HERO PROP: THE REGISTER



LIKE THE IDEA OF IT BEING VINTAGE → AN ANTIQUE ITSELF

HERO PROP: FANG'S PHONE



WHAT SHE'S
TYPING ON AT
THE BEGINNING



COFFIN SHAPED
& PERSONALIZED!

→ SHE MADE THE CHARM
HERSELF

HERO PROPS: STORE PD CONCEPTS



TREADING THE LINE
OF CREEPY & CUTE →
SOMETIMES BEING
A BIT OF BOTH!

STORE PD →
FURNITURE



EMPHASIS ON CURVES

STORE PD



IDEAS OF WHAT A STUFFED ANIMAL MAY LOOK LIKE IN THIS WORLD

← CUTESY ITEMS

↑ 'TWISTED' ITEMS ↑

STORE PD CONT.
LOVE THIS WALLPAPER



TikTok
@gloomandgore



ODDITIES
IN JARS

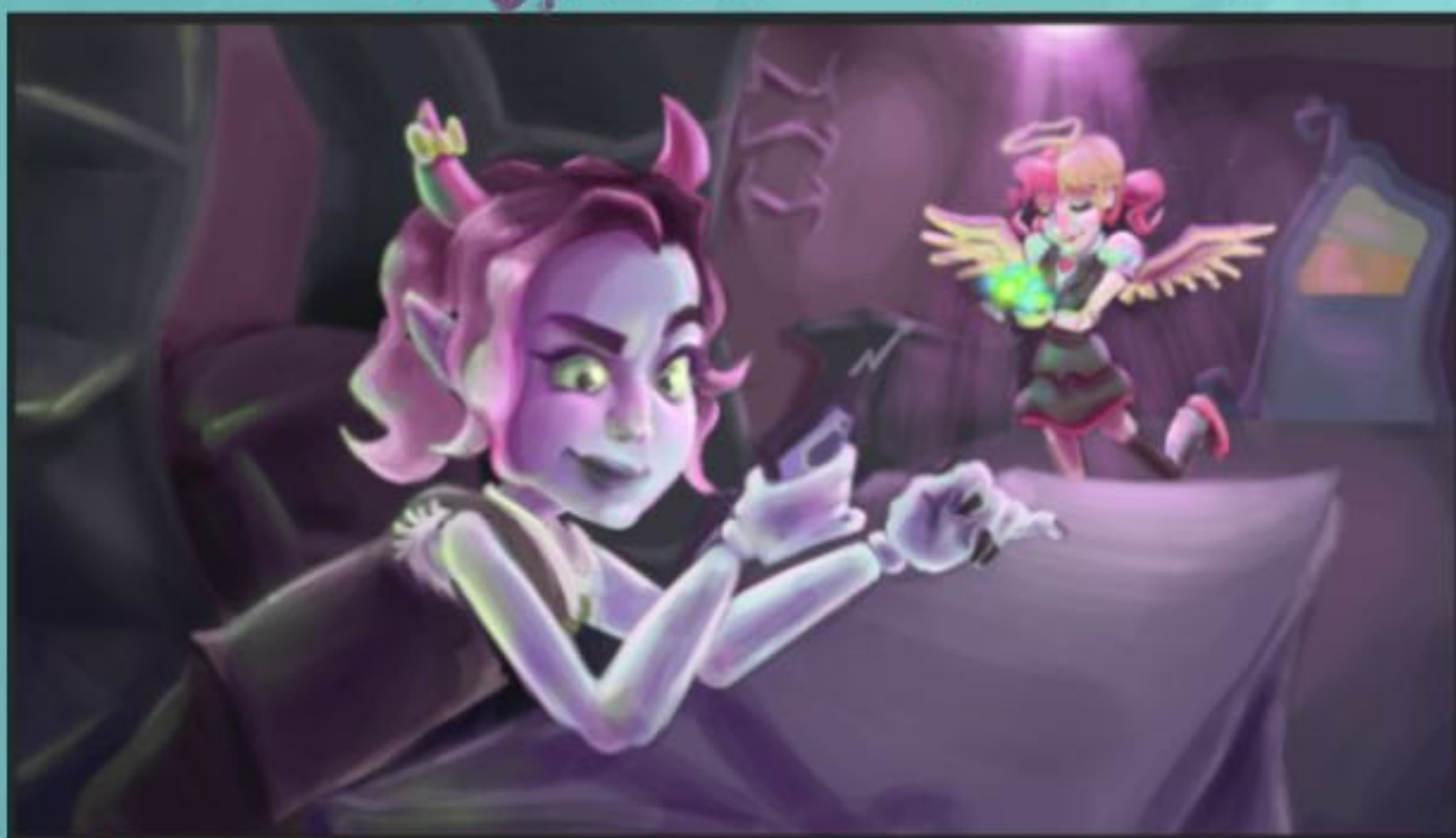
DOLLS OF CREATURES
THAT WOULD EXIST
IN THIS WORLD

COLORED LAMPS



COLOR SCRIPT

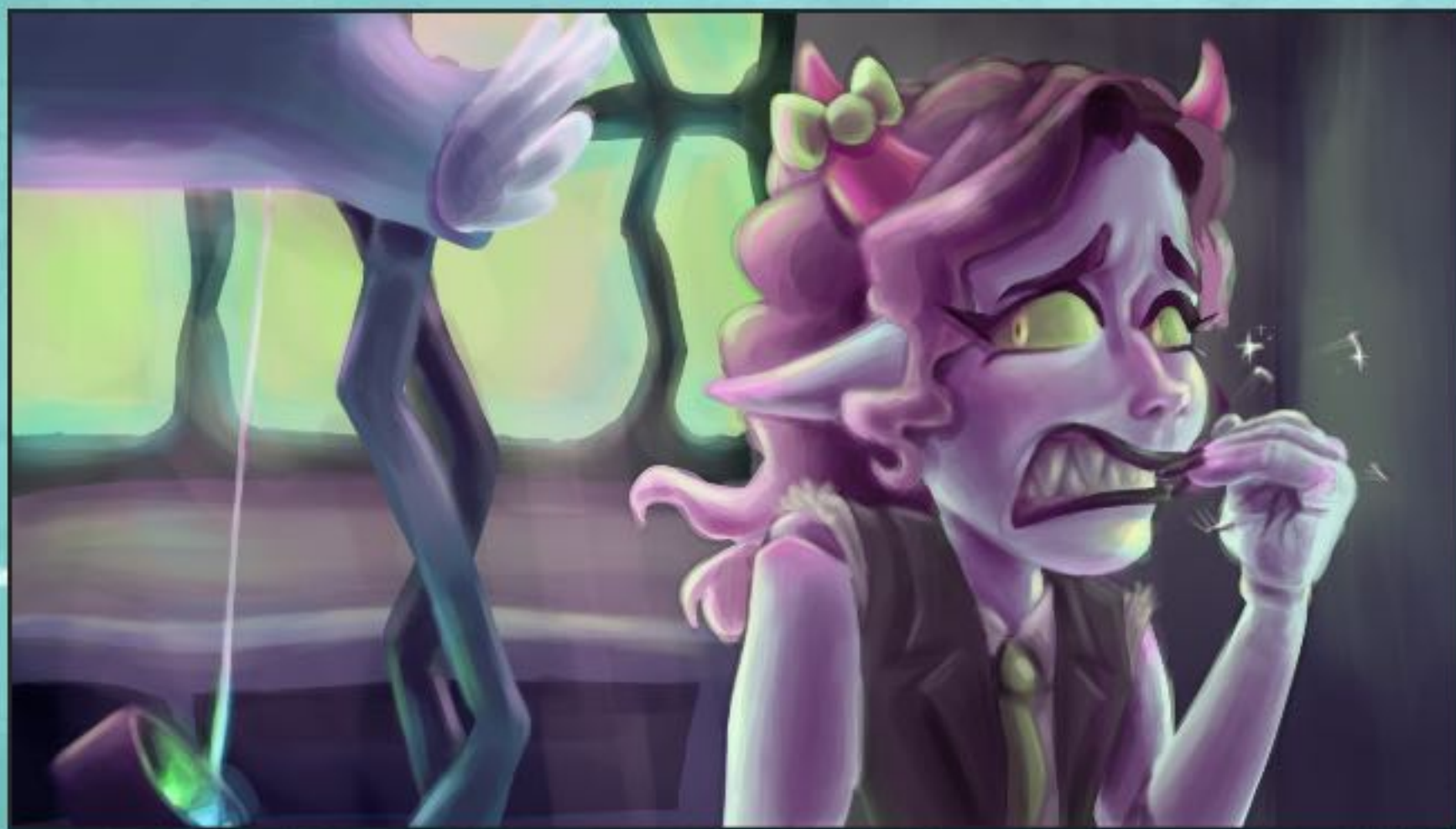
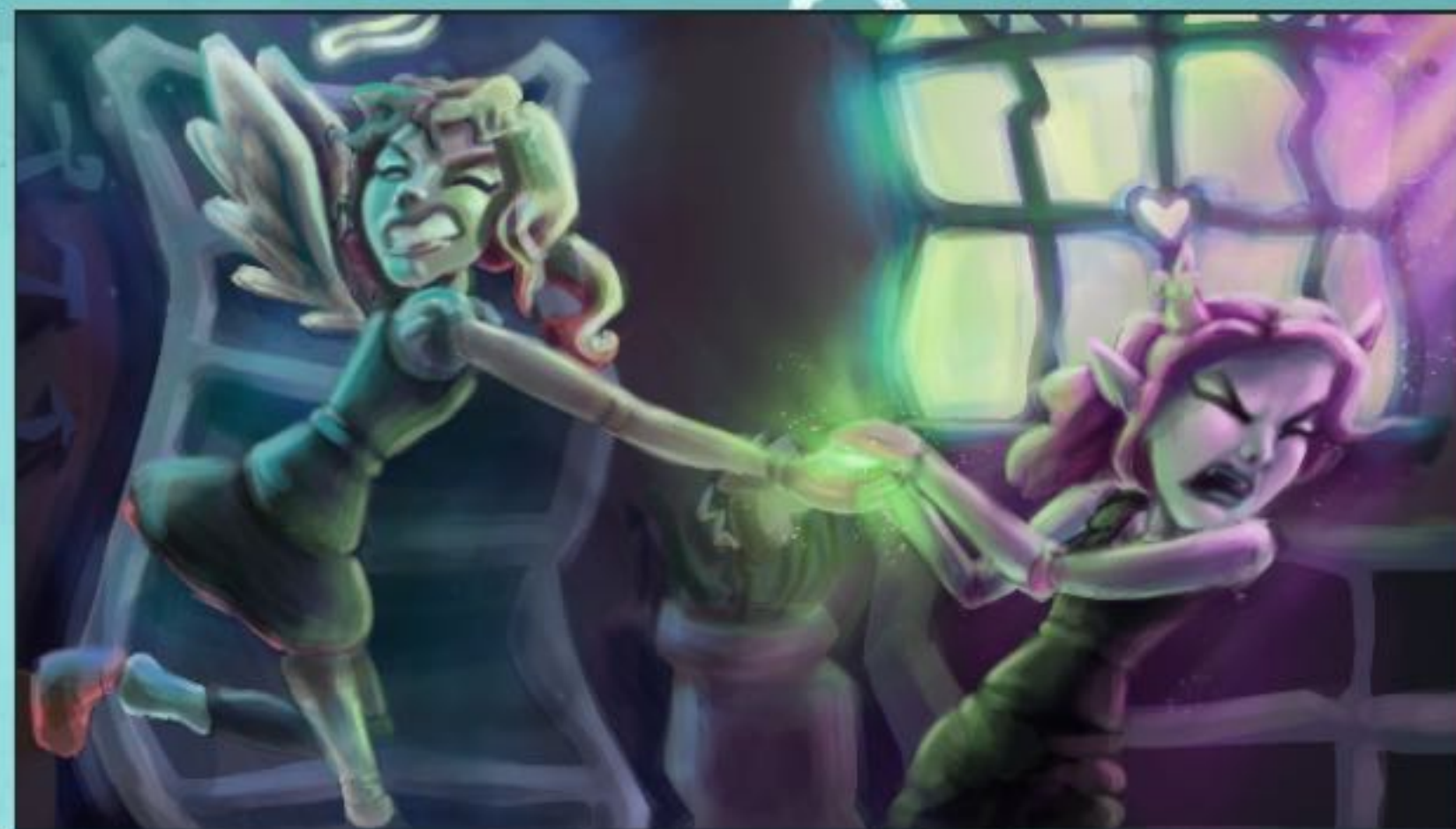
NORMAL ↴



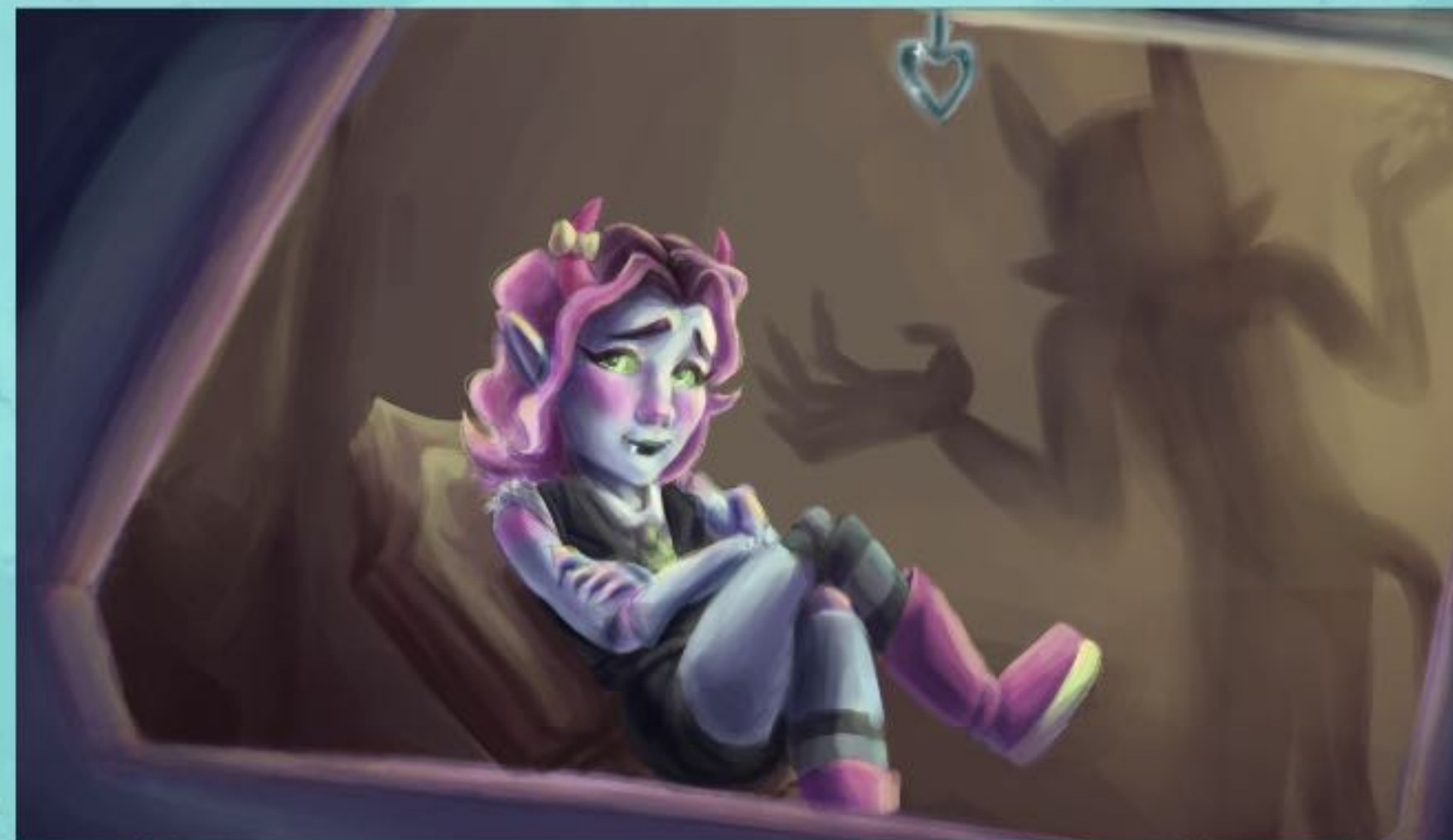
DISRUPTION ↴



STRUGGLE ↴



CHOICE ↴



NEW NORMAL ↴