



SUMMER PURKS PRESENTS

SHARP KNIVES
AND
SUGAR BLOOD

A SPOOKY COMEDY

[THE LOOKBOOK]

SHARP KNIVES AND SUGAR BLOOD



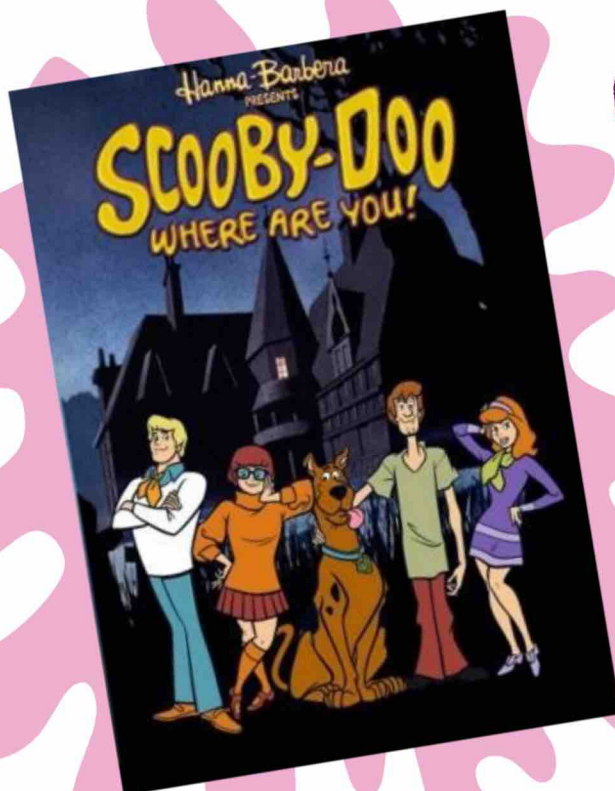
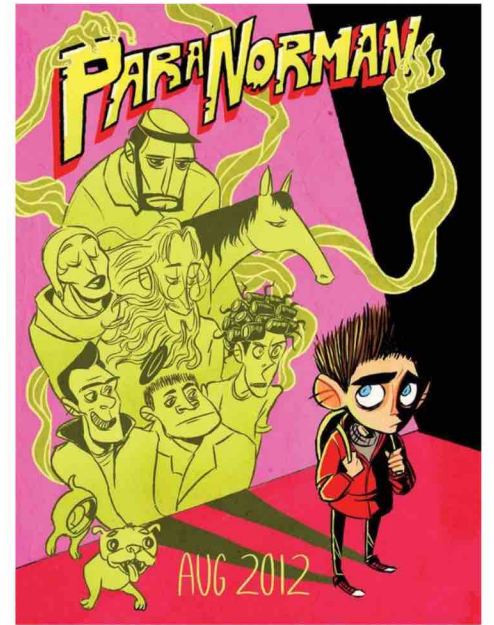
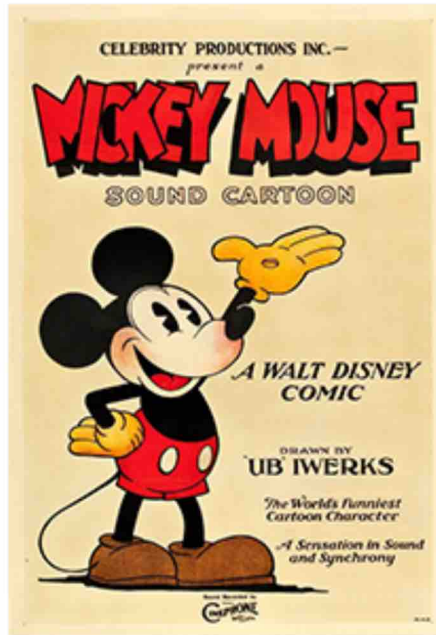
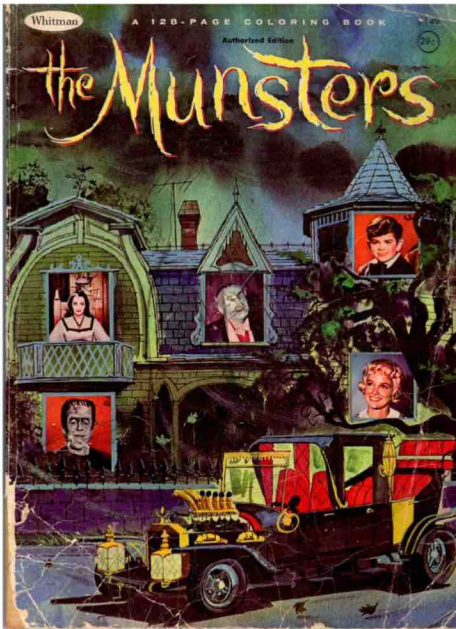
WRITTEN &
DIRECTED BY
SUMMER PURKS

ANIMATION
KATIE LIMENTAO

ORIGINAL SCORE
ANDREW HELON

TOONE INSPO

GOOFY / IRONIC COMEDIES W/ SPOOKY ELEMENTS...



MAIN INSPO:

HANNA BARBERA

SCOOPY DOO!

↳ QUICK PACE

↳ GOOFY PREMISE / REVEALS

↳ NOT MUCH MOVEMENT

↳ COLOURS ♡♡ / Aesthetic

TOONE INSPRO

(CONTINUED...)

OLD MICKEY CARTOONS:



↳ VERY QUICK

↳ OFTEN USE MISDIRECTION → AUDIENCE MADE TO THINK ONE THING → REVEALED TO BE ANOTHER

↳ MICKEY & CREW GOT INTO ALL SORTS OF SITUATIONS! AND THEY WERE CONFUSED FOR A LOT OF THEM (LOL)



PARANORMAN:

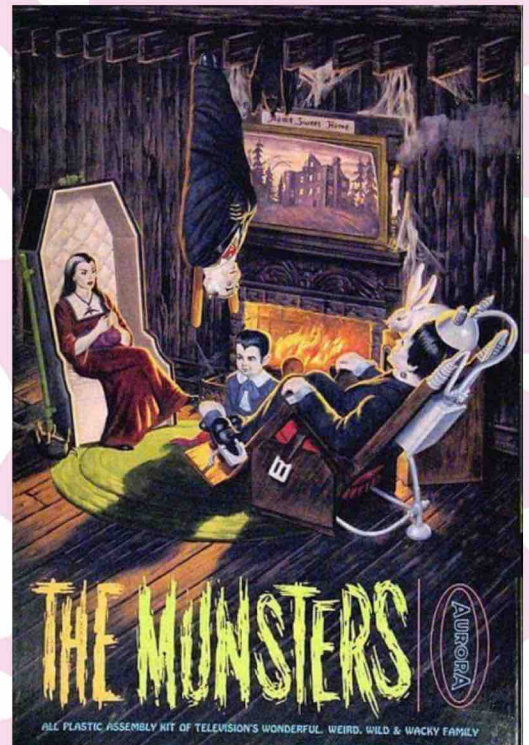
↳ GOOFY CHARACTERS

↳ STYLIZED

↳ REFERENCES TO CLASSIC HORROR

THE MUNSTERS:

↳ CLASSIC MONSTERS IN A TRADITIONALLY 'NORMAL' SETTING → MAKES FOR IRONY & SPOOKY JOKES



A KITBASHED WONDERLAND

- A SUBVERSION OF THE CLASSIC SATURDAY MORNING CARTOON (IE HANNAH BARBARA, MICKEY MOUSE & LOONEY TUNES) - COMPLETE WITH 3:4 ASPECT RATIO, TITLE CARDS, A CIRCLE WIPE & ACCOMPANYING MUSIC THROUGHOUT



↳ **BUT**, (WHERE THE SUBVERSION COMES IN)

WITH A STYLISTIC DIFFERENCE - A STOP MOTION / MINATURE FEEL, & A CUTE DOLL-LIKE WORLD. PEPPER & REESE ARE MEANT TO FEEL LIKE LITTLE DOLLS LIVING IN A DOLL HOUSE AS OPPOSED TO REAL GIRLS LIVING IN A GIANT MANSION.



CHARACTERS: PEPPER (MINT)

(PROTAGONIST)



SHE'S A CUTE SUGAR-GOTH ♡



I WANT THE GIRLS TO FEEL LIKE DOLLS IN A DOLL HOUSE - THE HOUSE OF THEM ARE A SET

Textures / COSTUMES INSPIRED BY DOLLS & MINIATURES

CHARACTERS: PEPPER (MINT)

(PROTAGONIST)

↳ PERSONALITY / CHARACTERIZATION

- SHE/HER, 20s
- BOUTIQUE EMPLOYEE
- ASPIRING FASHION DESIGNER
- OLDER SISTER
- HOME BODY, PREFERS TO STAY IN



FEMININE, TIMID, QUIET, NON-CONFRONTATIONAL. OFTEN TIMES LETS HER ANXIETY GET THE BEST OF HER

→ SIMILAR TO VIOLET IN THAT THEY BOTH ARE OBSERVERS WHO DON'T REALLY PUSH THEMSELVES OUT OF THEIR COMFORT ZONES, BUT ALSO HAS BIG ASPIRATIONS IN LIFE.



← SIMILAR TO DIPPER IN THAT SHE'S EASILY STARTLED, SQUIMISH, AND AWKWARD; BUT ALSO VERY DETERMINED AND LOYAL TO THOSE CLOSE TO HER.



↳ SIMILAR TO HICUP IN THAT SHE ISN'T ONE TO STAND UP FOR HERSELF & OFTEN TIMES FEELS LEFT OUT. ALTHOUGH ALSO LIKE HICUP, SHE IS VERY SELFLESS

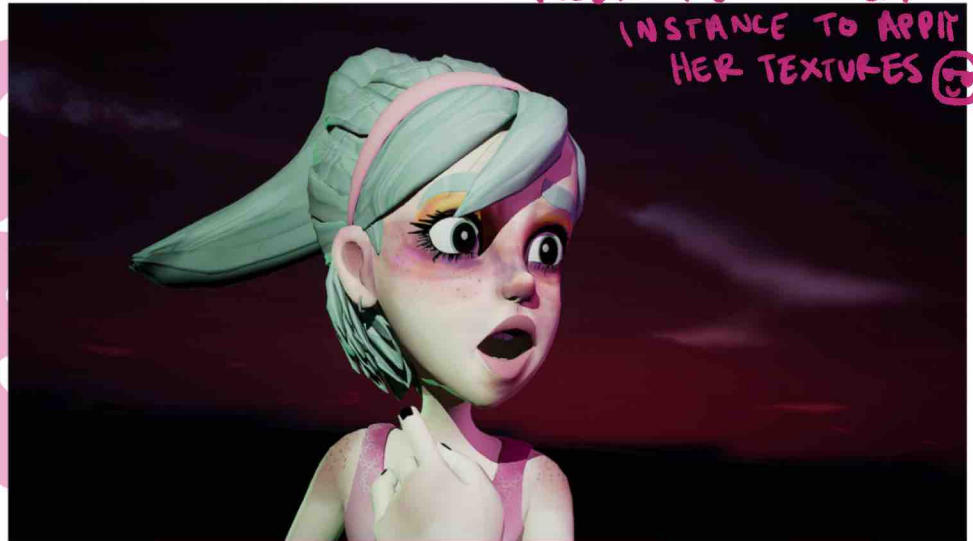
TEXTURE TEST

↳ PLUS UNREAL TEST

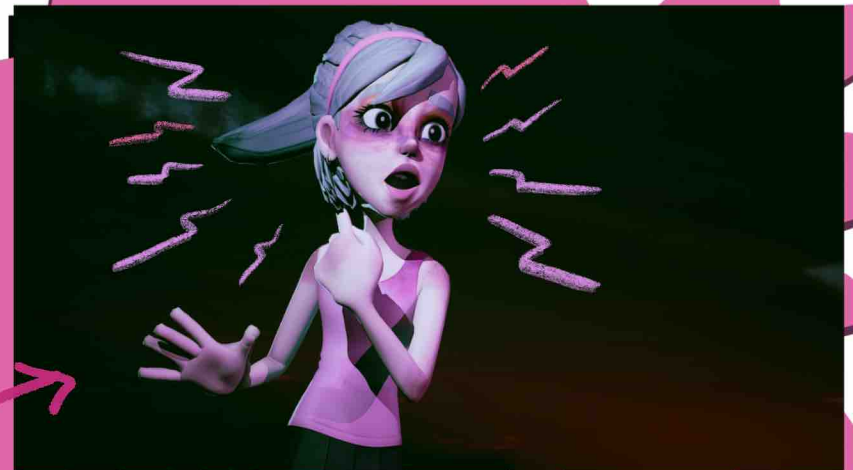
AS IN SUBSTANCE 2



I USED MY OWN MATERIAL INSTANCE TO APPLY HER TEXTURES 😊



WOULD BE COOL TO HAVE 2D OVERLAY EFFECTS THRU OUT



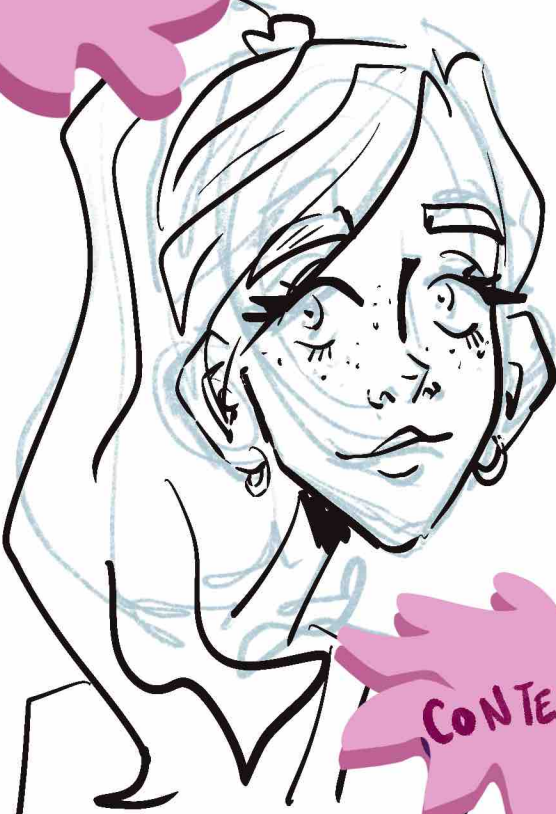
EXPRESSION SHEET



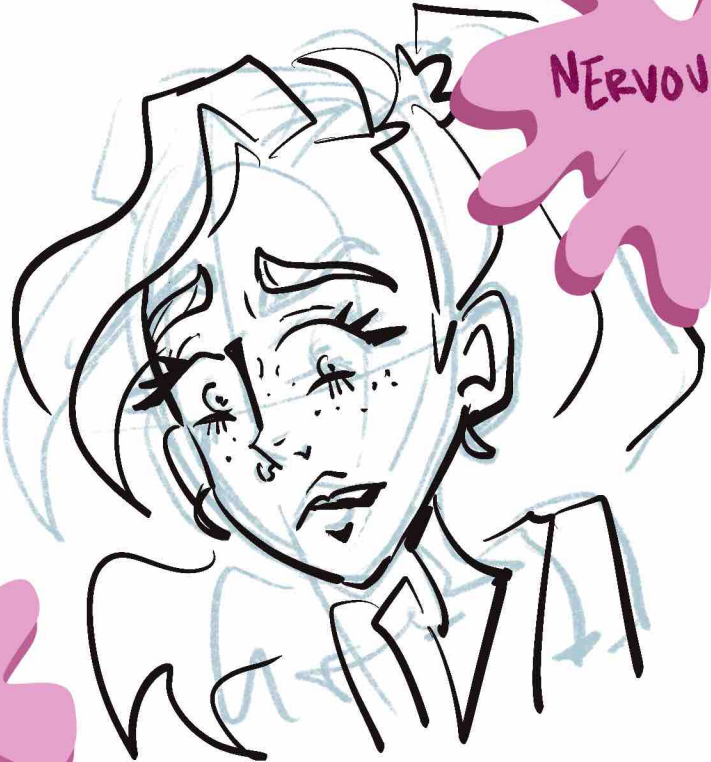
SCARED



ANGRY



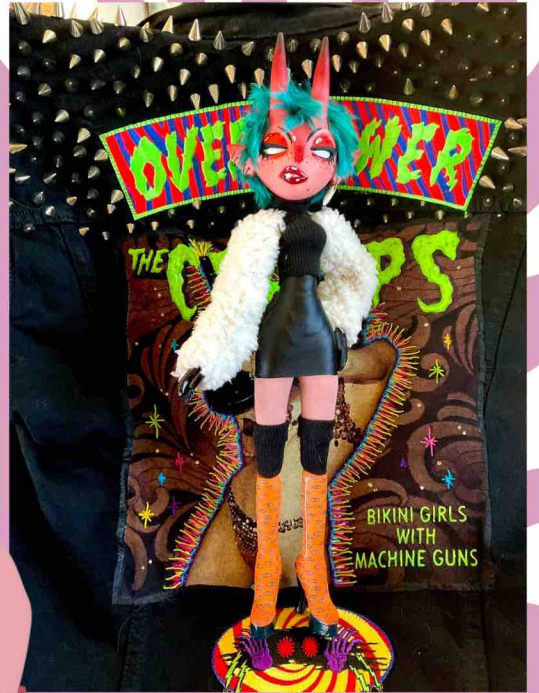
CONTENT



NERVOUS

CHARACTERS: REESE ('s PICES)

(THE ROOMMATE)



SHE'S LOUD, OUTSPOKEN,
A RISK TAKER &
DOESN'T MIND GETTING HER
HANDS DIRTY



CHARACTERS: REESE ('s Pieces)

(THE ROOMMATE)

↳ PERSONALITY/ CHARACTERIZATION

- SHE/HER, 20S
- MAJORED IN FASHION MARKETING (WHERE SHE MET PEPPER) → BUT IS AT THE TIME OF THE STORY IS UNEMPLOYED.
- ONLY CHILD
- PREFERS GOING OUT



REESE IS OUTGOING, ALWAYS OVERCOMMITTING, VERY OUTSPOKEN, LIVES AGEING TO HEIPEVEN WHEN SHE DOESNT HAVE THE MEANS TO.



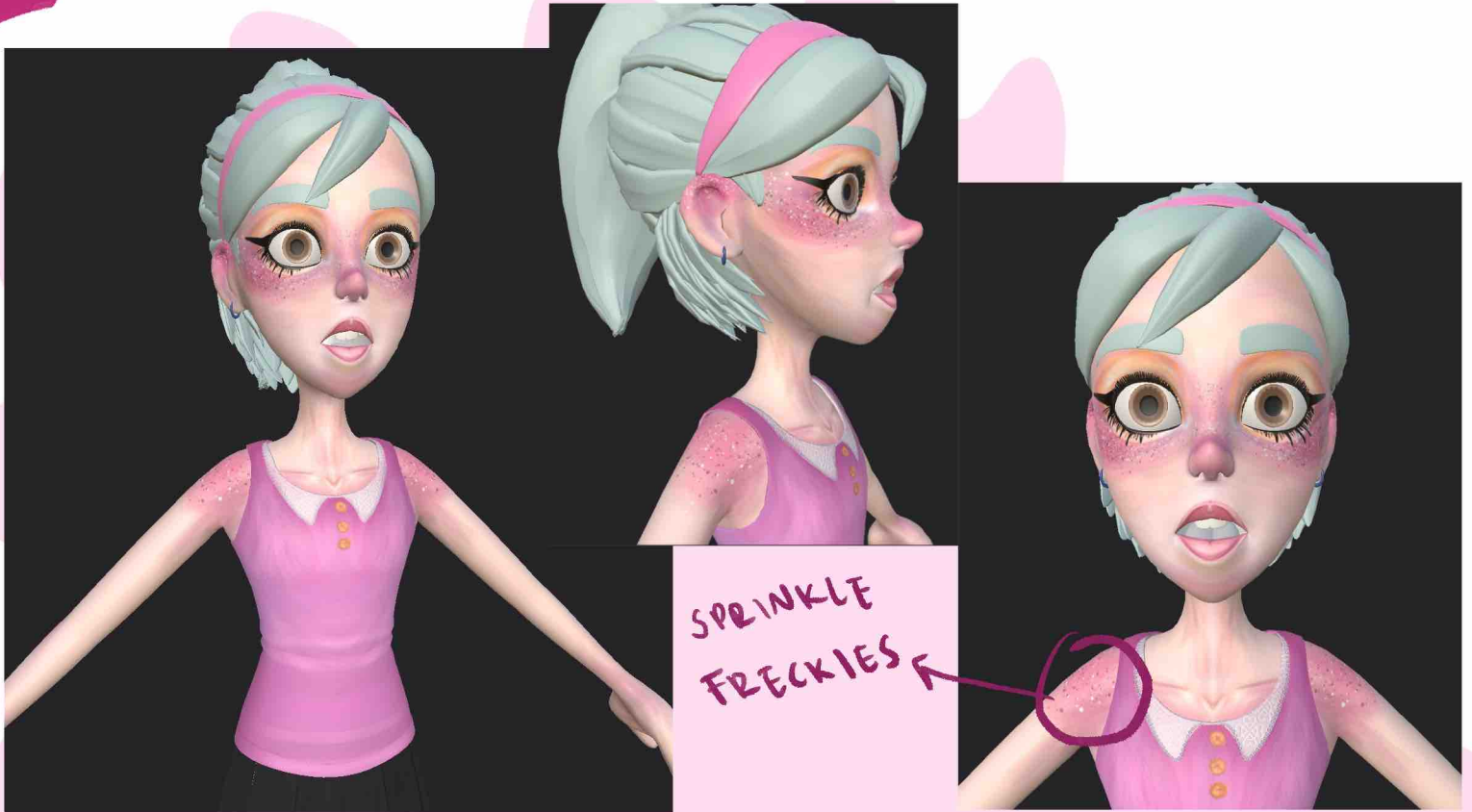
→ SIMILAR TO WINNIE IN THAT SHE IS STUBBORN, LOUD, ALWAYS MOVING, BUT ALSO WANTS THE BEST FOR HER FRIENDS & WANTS TO PUSH THEM OUT OF THEIR COMFORT ZONES

- INSECURE ABOUT HER SKILL SET, OFTEN COMPARES HERSELF TO PEPPER BUT ISNT VOCAL ABOUT IT. SHE IS VERY SUPPORTIVE OF PEPPER & IS HER #1 FAN

AS PEPPER IS SIMILAR TO HICCUP, REECE HAS SHARED TRAITS W/ ASTRID. SHE HAS AN OUTWARDLY CONFIDENT PRELENCE & KNOWS WHERE HER STRENGTHS LIE. SHE'S NOT AFRAID TO BE VOCAL WHEN SHE FEELS NECESSARY



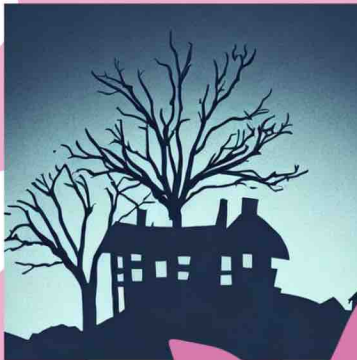
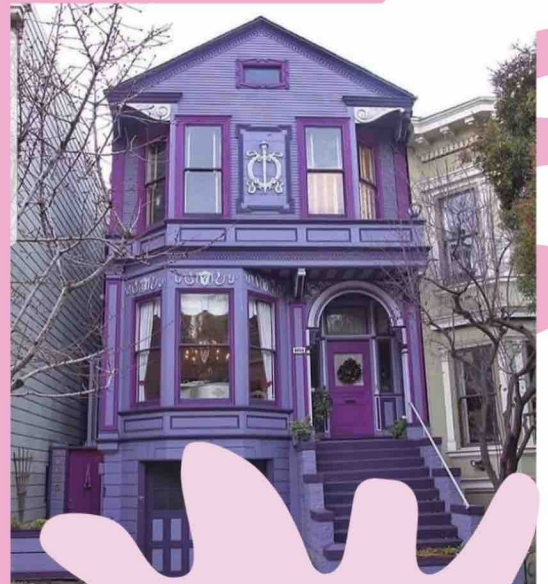
TEXTURES (STILL IN PROGRESS)



HAND PAINTED
TO BE IN LINE
WITH THE FACT
THAT THESE GIRLS
ARE MEANT TO
FEEL LIKE DOLLS
LIVING IN A
MINIATURE
WORLD.

SET INSPO: THE HOUSE

REALISTICALLY
ONLY GOING
TO SEE FULL
HOUSE IN
SILHOUETTE
DURING
ESTABLISHING



I WANT THE
DESIGN TO BE EXTRA,
STYLIZED, W/ NOT A
PARALLEL LINE IN
SIGHT, LIKE A TWISTED
DOLL HOUSE.

THEY LIVE ISOLATED
TOP A HILL W/A
FOREST SURROUNDING
THEM. LOTS OF
PINK/PURPLE

SET INSPRO: KITCHEN



SET CONCEPT: KITCHEN

THINGS WOULD BE EVERY WHERE THO



POSSIBLE COLOURS

PASTELS
→
PINKS!

Light Gray	Cyan Blue	Grayish Cyan Blue
Grayish Cyan Blue	Dark Cyan Blue	Grayish Cyan Blue
Dark Grayish Magenta	Dark Magenta Pink	Magenta Pink
Magenta Pink	Dark Magenta Pink	Pink
Dark Pink	Pink	Grayish Pink
Grayish Pink	Pink Red	Dark Pink Red

SET LAYOUT

↳ TOP DOWN FROM UNREAL BLOCKOUT

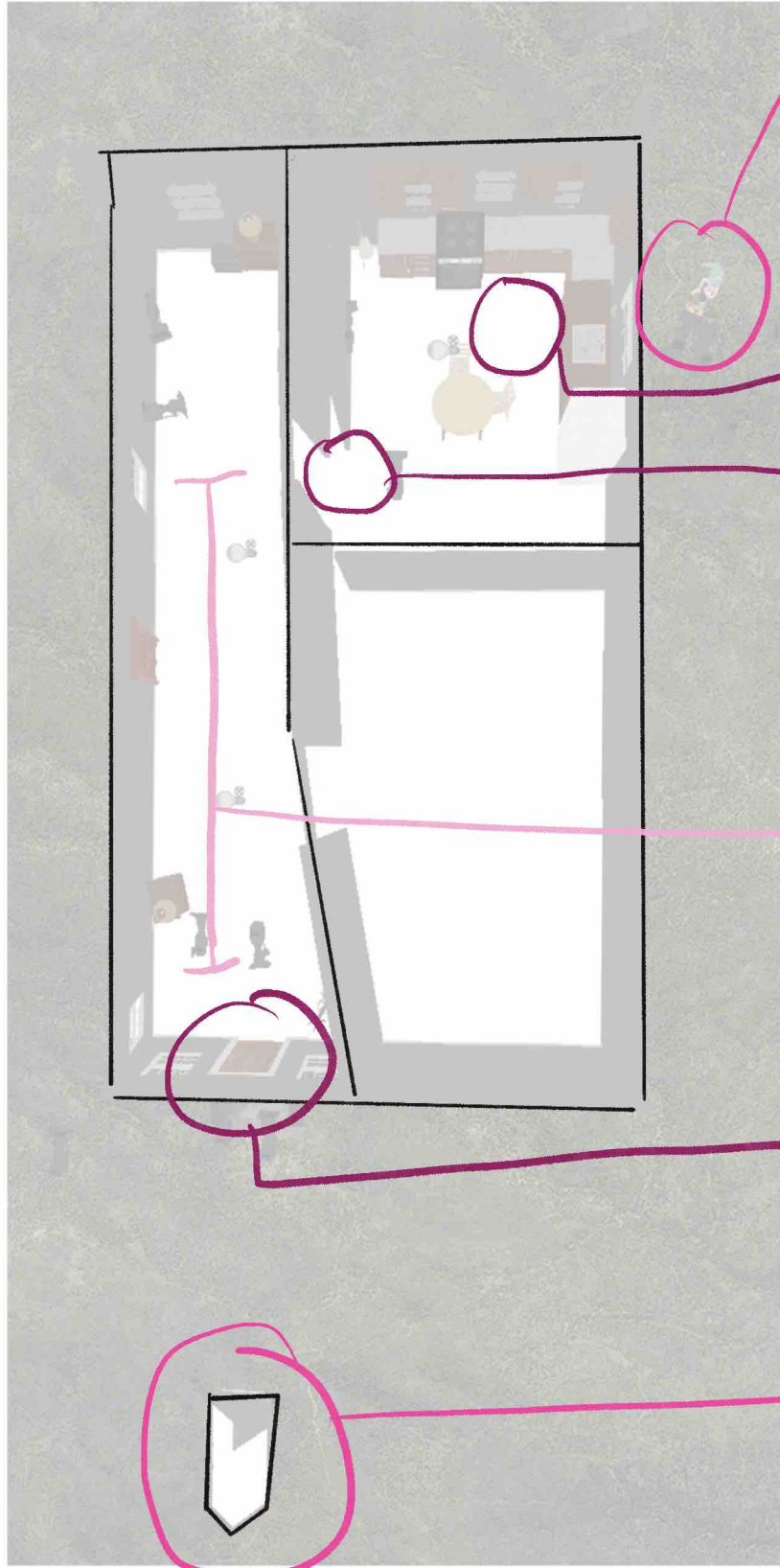


WHERE PEPPER STARTS

- B/C THE HALLWAY IS WARPED TO LOOK LONGER THAN IT ACTUALLY IS, THE HOUSE IS ALSO WARPED TO ACCOUNT FOR THE LENGTH, IRL THE HOUSE WOULDN'T BE THIS LONG → THE DISTANCE FROM WINDOW TO SHED = SEEMS LONGER THAN IT WOULD BE

SHED

BLOCKING



1. PEPPER WALKING UP TO HOUSE → SEES STABBING, DROPS CUPCAKES → CRAWLS UNDER WINDOW → RUNS OFF

5. REESE IN KITCHEN W/ CUPCAKES

2. PEPPER IN DOORWAY / CIRCLEWIPE → END

4. PEPPER TRAVELS DOWN HALLWAY → HEARS SOMETHING → ENDS UP AT ENTRANCE OF KITCHEN

3. AT DOOR → DOOR KNOB → SLIPS INSIDE

2. INSIDE SHED → POPS OUT W/ BAT → TAKES A FEW STEPS FORWARD

PROPS

HERO PROPS:

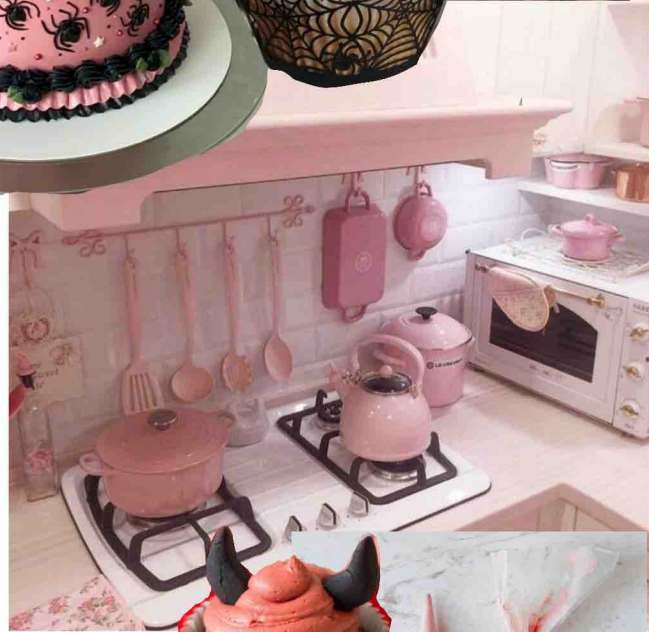
- ♥ Pepper's BAT
- ♥ Kitchen supplies
- ♥ CUPCAKES
- ♥ ICING BAGS
- ♥ BIG KNIFE!

KITCHEN:

(TO BE COPIED/PASTED)

- ♥ Baking tray
- ♥ WISK / SPOONS
- ♥ Flour bags
- ♥ BOWLS, CUPS
- ♥ POTS / PANS
- ♥ BOWLS / PLATES

DOESNT
NECESSARILY
HAVE TO BE
THESE THINGS →
JUST HAS TO
BE CLUTTER / MESSP



HERO PROPS

CONT...



- AN Icing BAG IS WHAT PEPPER STABS AT THE DISRUPTION TO CAUSE THE SPLATTERING. SHE IS FRUSTRATED WITH THE PIPING TOOL SO SHE REVERTS TO A COMEDICALLY LARGE KNIFE.

AUDIENCE CAN GATHER HER FRUSTRATION AT THE REVEAL BASED ON THE MESSY STATE OF THE KITCHEN. SHE IS OBVIOUSLY SHORT TEMPERED & NOT WELL VERSED IN BAKING



THE BAT IS GOING TO BE PINK TO MATCH THE GIRLS & THEIR WORLD. THE COLOR IS ALSO NONTHREATENING & PUSHES THE IDEA THAT IF FACED WITH ACTUAL DANGER, PEPPER WOULDN'T KNOW HOW TO PROTECT HERSELF.



KNIFE IS THE ONLY PROP THAT ISN'T PINK & CUTESY, REALISTICALLY THE GIRLS WOULDN'T EVER REALLY BE NEEDING TO USE A KNIFE OF THIS SCALE

HERO PROPS CONT... CUPCAKES



I IMAGINE
THE ONES PEPPER
HAS TO BE FANCY/
WELL DECORATED

- THE FILM BEGINS
↗ ENDS W/ PINK CUPCAKES!
- PEPPER'S ARE STORE
BOUGHT ↗ REESE'S
ARE A BIT SAD
↗ DROOPY

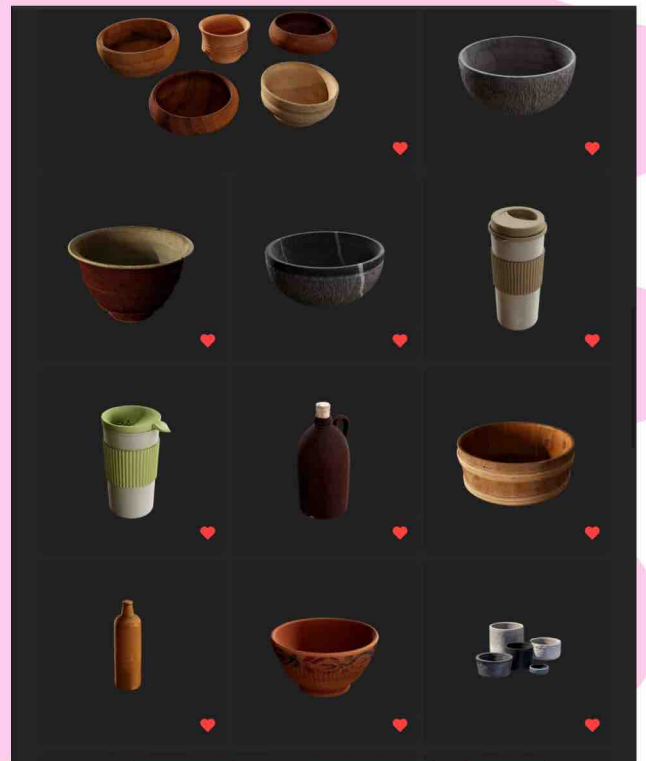
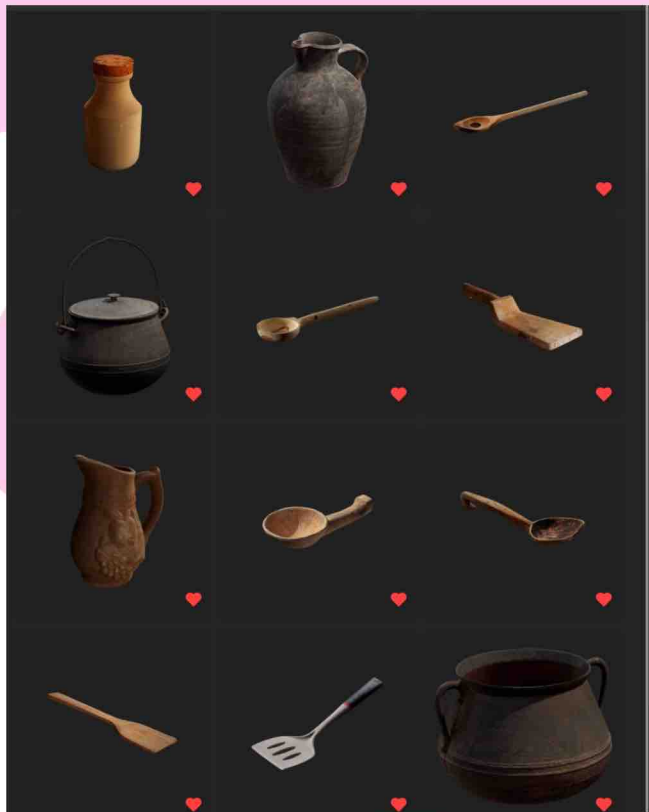
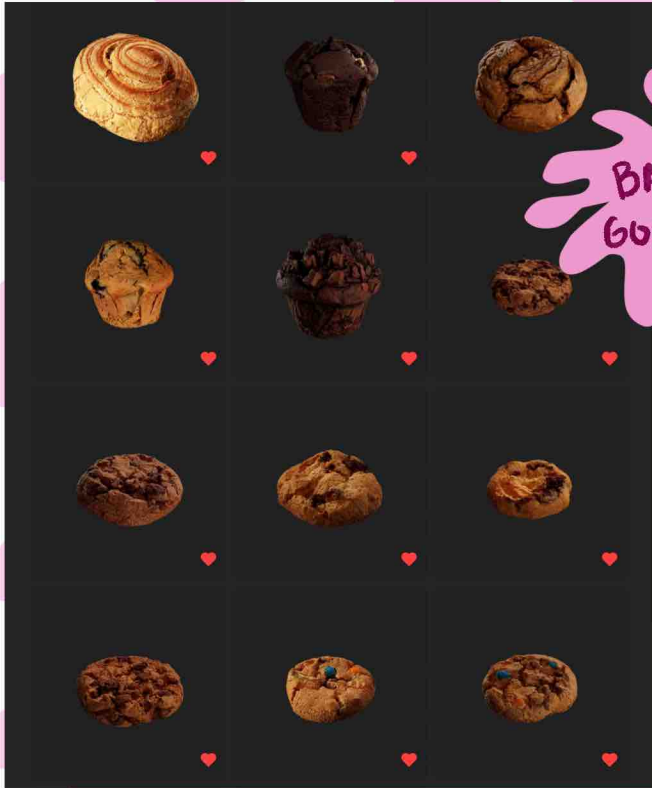


- I WANT THEM TO
LOOK LIKE PLASTIC
PAINTED OVER →
LIKE MINIATURE
PROPS USED FOR
A DOLL HOUSE OR
BAKERY DISPLAY



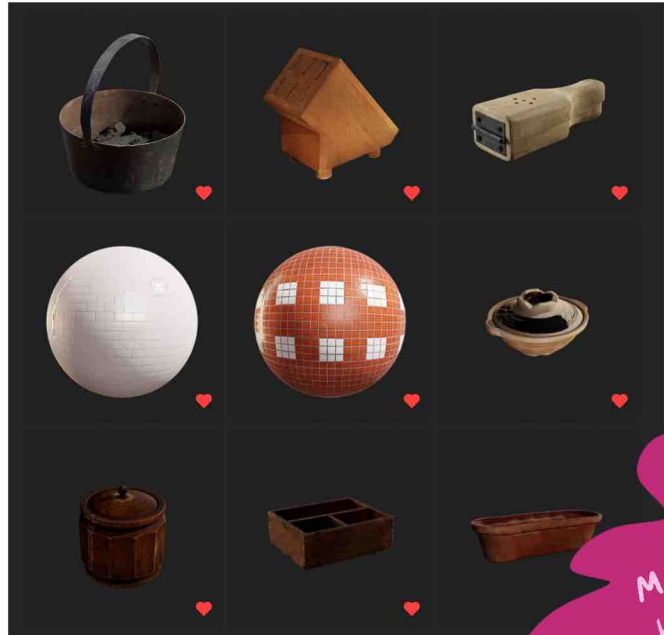
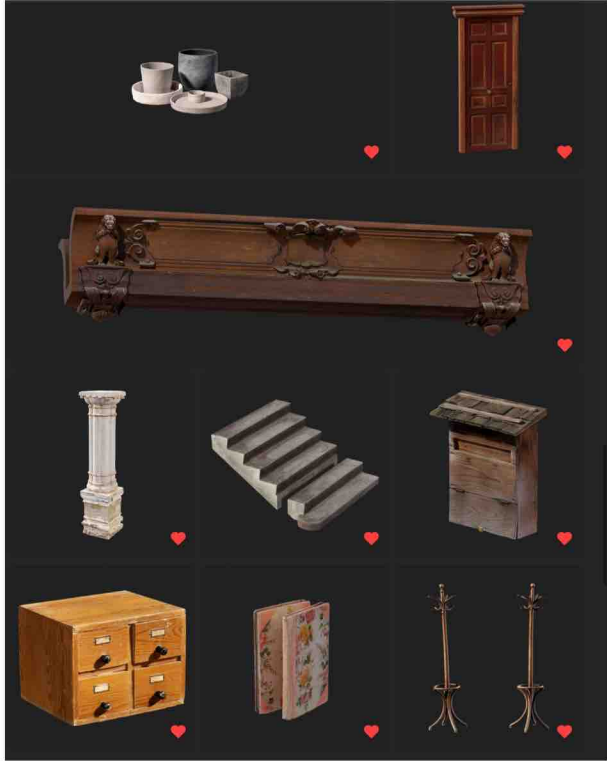
ON BRIDGE...

COOKING
UTENSILS!



CAN BE RETEXTURED TO
MATCH AESTHETIC

MORE...



MORE
KITCHEN
DECOR + SOME
HOUSE
OPTIONS

← BATS!



KITCHEN I
DID FOR
ASSIGNMENT

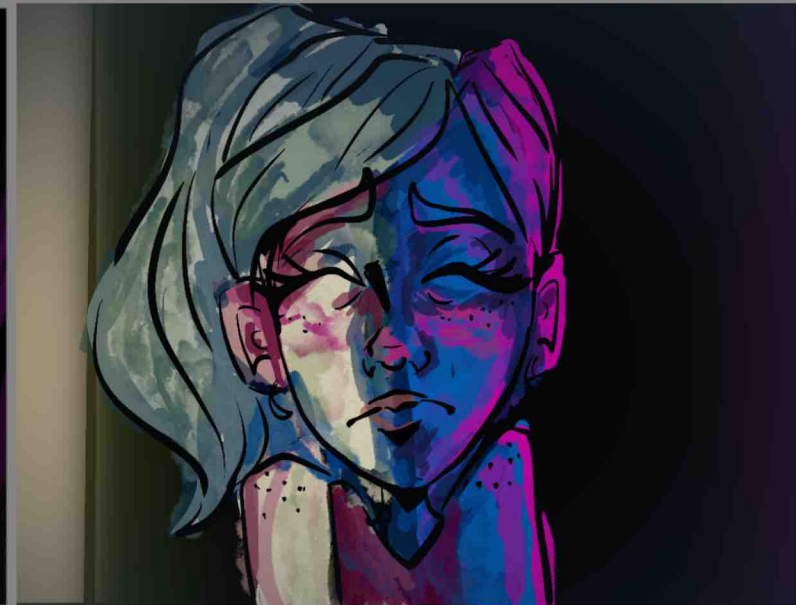
USING BRIDGE 2 UNREAL BASIC FURNITURE
PACK / ALTERED TEXTURES

COLOR SCRIPT

DISRUPTION ↴



STRUGGLE ↴



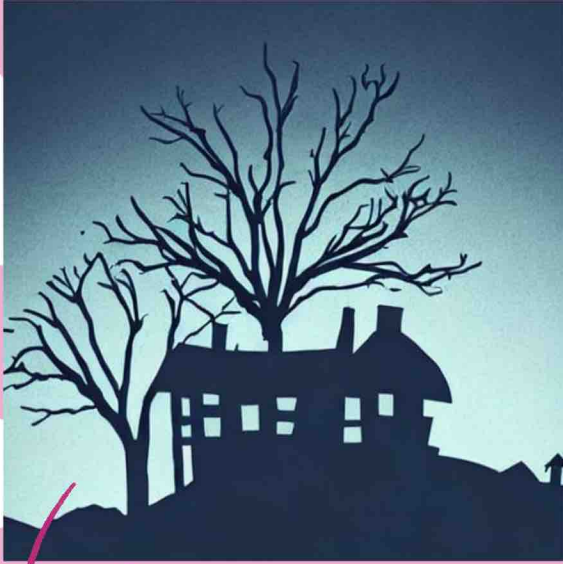
TURNING POINT ↵



CHOICE ↵

RESOLUTION ↴

LIGHTING ACT 1: THE NORMAL



ESTABLISHING
SHOT → HOUSE
IN DISTANCE IN
SILHOUETTE W/
FOREST OF
BLACK TREES

NATURAL NIGHT LIGHT →
VERY BLUE, HIGH CONTRAST

PEPPER WALKING
UP TO THE HOUSE →
PRACTICAL LIGHTS
BEING FROM INSIDE
THE HOUSE → SLIGHTLY
WARM → OTHERWISE
LIGHT COMING FROM
'MOON' → VERY
BLUE STILL W/
SOME WARMTH
FROM INSIDE



LIGHTING: DISRUPTION & STRUGGLE 1



↑ MOTIVATED LIGHT ↓

- PEPPER IS BEING LIT BY THE PINK IN THE WINDOW AS WELL AS THE NIGHT SKY

- STILL HIGH CONTRAST.

- SUBVERSION OF RED = DANGER, IN THEIR WORLD PINK IS REPRESENTING DANGER



LIGHTING: STRUGGLE CONT.



↳ MAIN REFERENCE

-STILL BEING HIT BY NIGHT SKY, MORE DARK GIVEN SHE'S NOT NEAR THE HOUSE / MORE ISOLATED NOW



LIGHTING: TURNING POINT



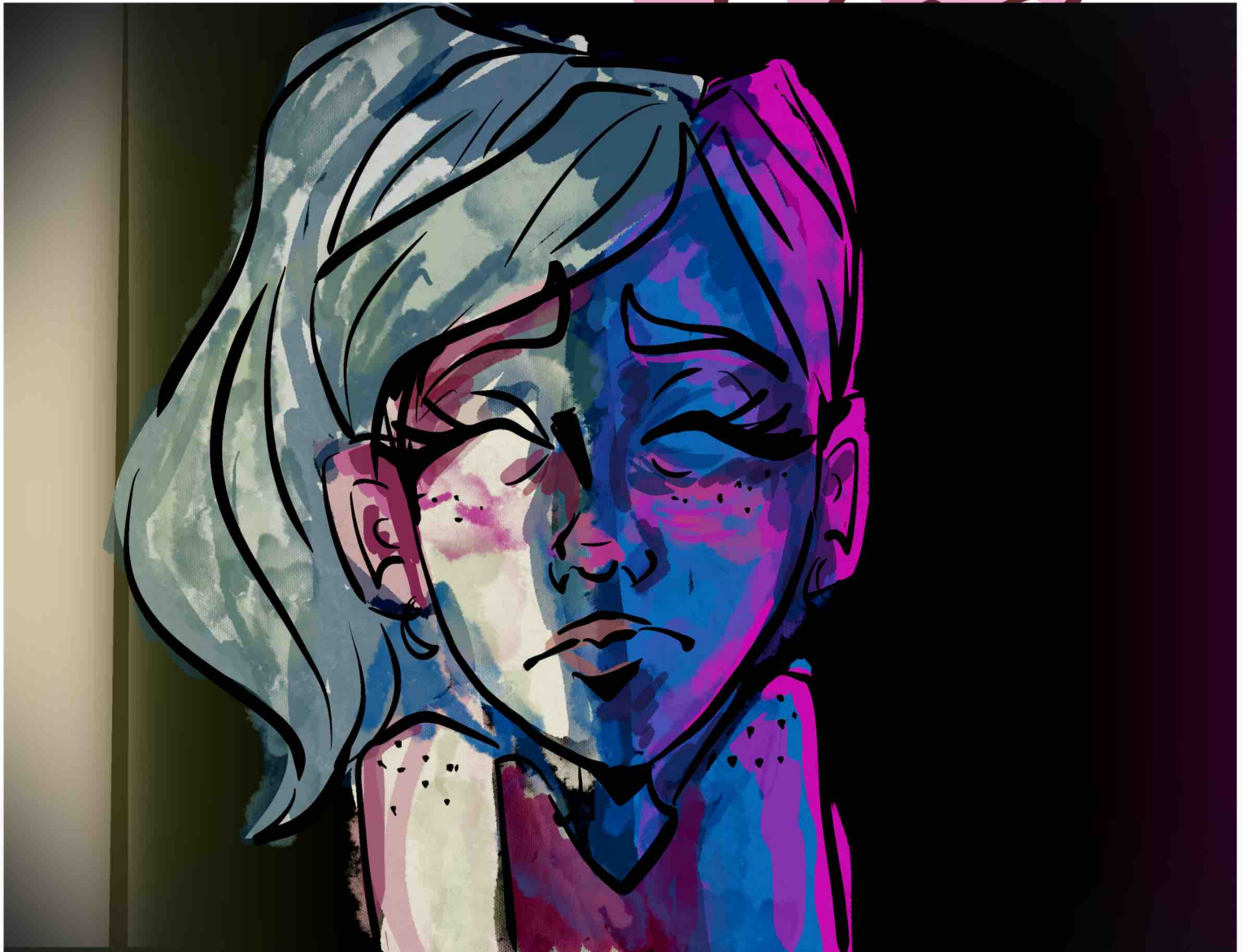
- NIGHTMARE HALLWAY!
- PEPPER BEING LIT BY PINKS AND BIVES AS SHE WALKS DOWN IT TOWARDS THE KITCHEN
- KITCHEN LIGHT MORE WARM / NATURAL



LIGHTING: CHOICE



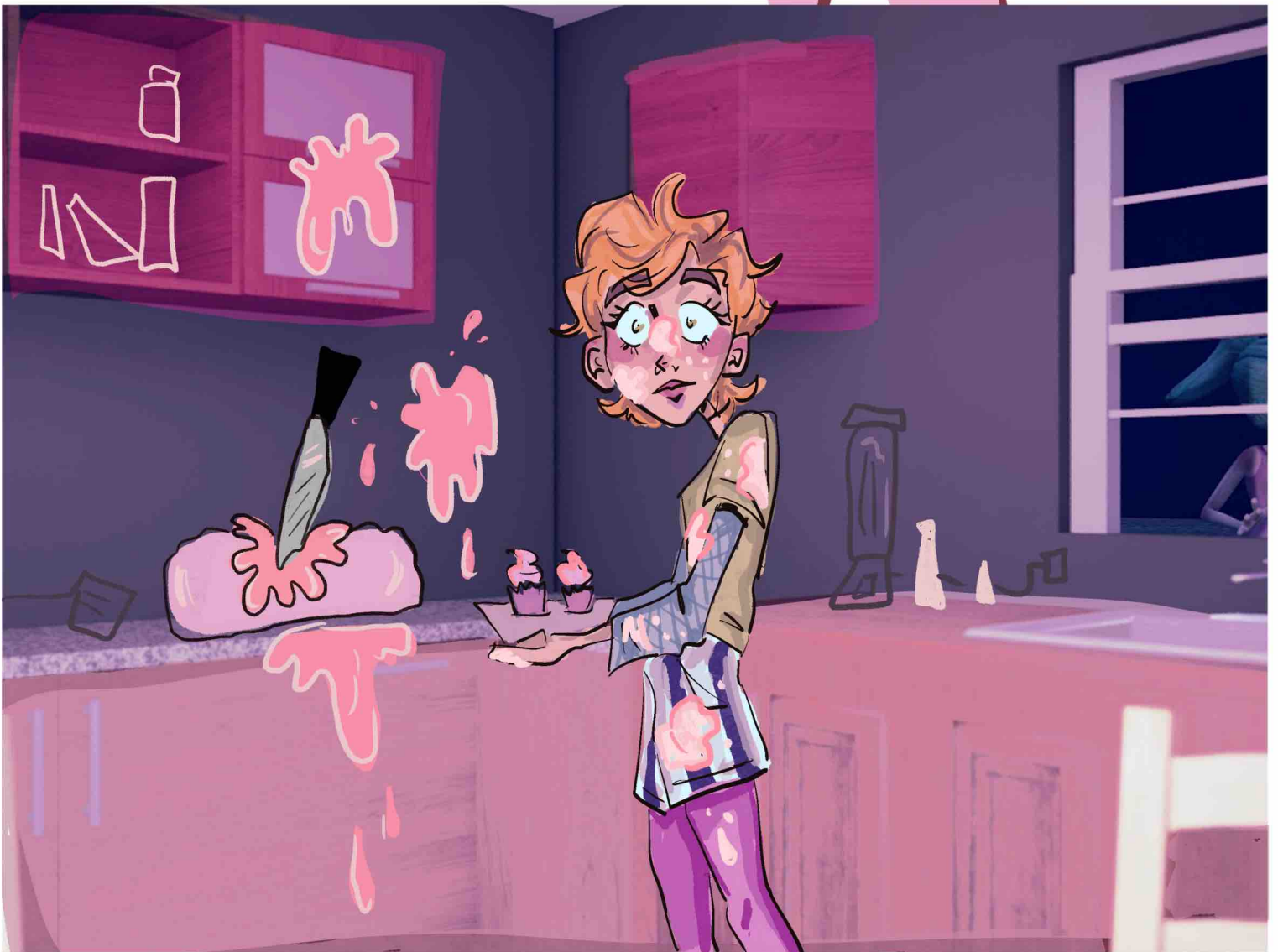
- HALF OF PEPPER LIT
BY HALLWAY, OTHER HALF
BY THE KITCHEN AS SHE
STANDS OUTSIDE THE
ENTRANCE IN FEAR
BY JUMPING IN



LIGHTING: RESOLUTION

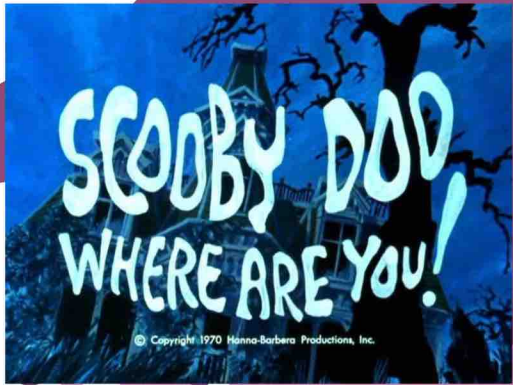


- NATURAL, SOFT, WARM
- NO THREAT!
- MOTIVATED LIGHTS FROM WITHIN THE KITCHEN-
IC. PRACTICAL LIGHTS



VISUALS

(TO HOPEFULLY BE DONE AS 2D OVERLAYS IN AFTER EFFECTS)



↑ OPENING TITLE CARD

POSSIBLY ENDING CARD ↓



WOULD LOVE (♡) it to BE REMNICENT OF CLASSIC HORROR (LIKE 30S-40S ERA) BUT PINK & CUTESY :D

THAT'S ALL
FOLKS!

