

# CATCH AND EXTERMINATE



HOW TO: DEAL WITH PESTS & THE OCCASIONAL PARANORMAL BEING

## [THE LOOKBOOK]

A FILM BY SUMMER PURKS

# INITIAL THOUGHTS / BRAIN DUMP

Catch and Exterminate employee Elliot is the best to ever do it. Everyday she's killing pests with no problem and doesn't mind getting her hands dirty. When she gets a phone call from a homeowner who is highly distressed about a bat, Elliot's confidence and cockiness blinds her and she assumes she knows what she's getting into. Upon getting to the home, she quickly discovers this 'bat' is not a bat at all but rather a mystical being. She begins to experience fear for the first time ever on a job. She doesn't have it in her to give up though, she has too much at stake and values her reputation too much. She hunts the figure throughout the house and upon capturing it, it is revealed that the figure is a vampire. But instead of being scary and putting up a fight, she just appears to be a scared girl trying to escape. Elliot is caught between failing a job and losing her reputation as the number one killer and possibly taking the life of an innocent.

# THEMATIC STATEMENT

Putting the needs of others before our own can often result in greater rewards.

# STORY Q

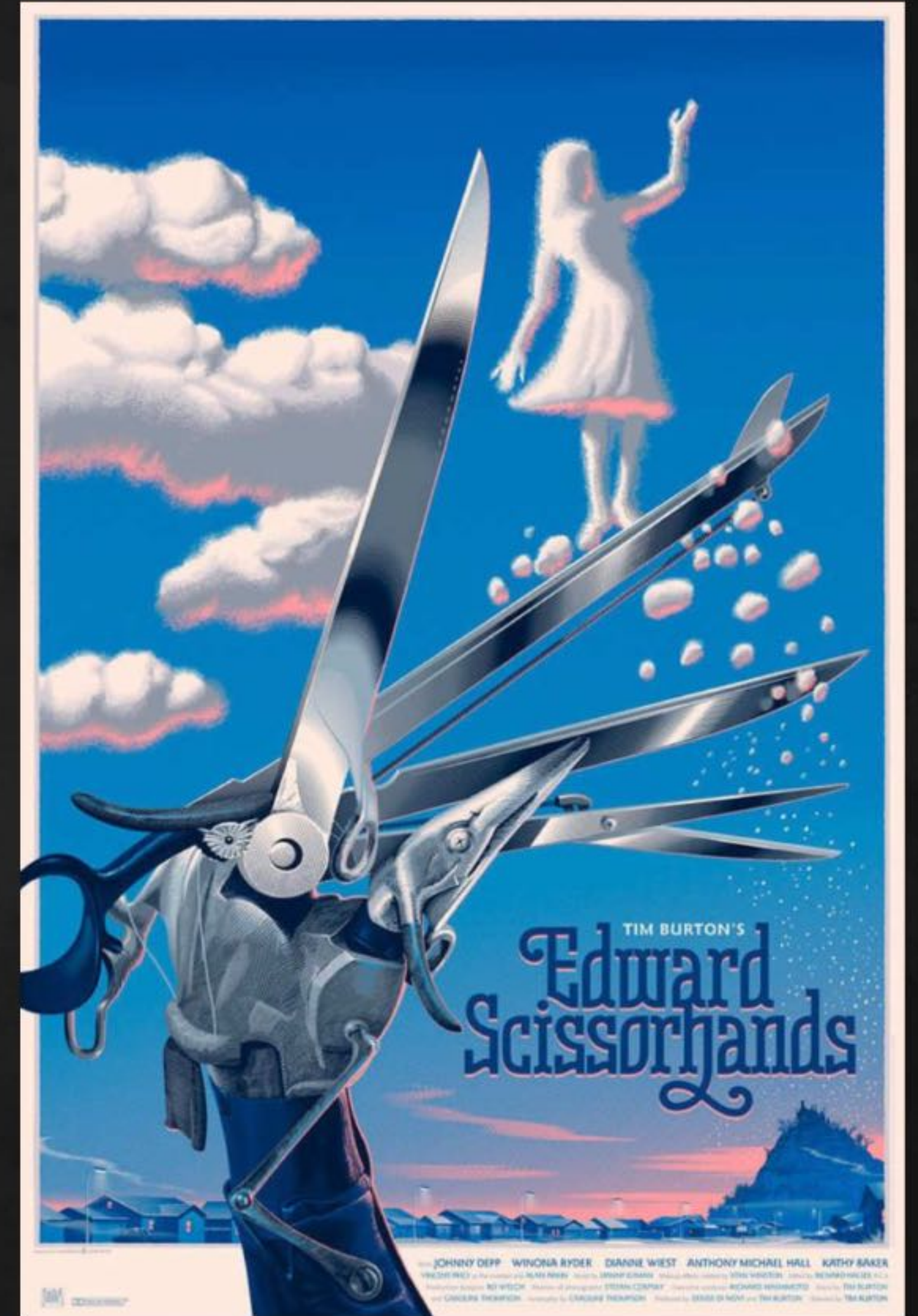
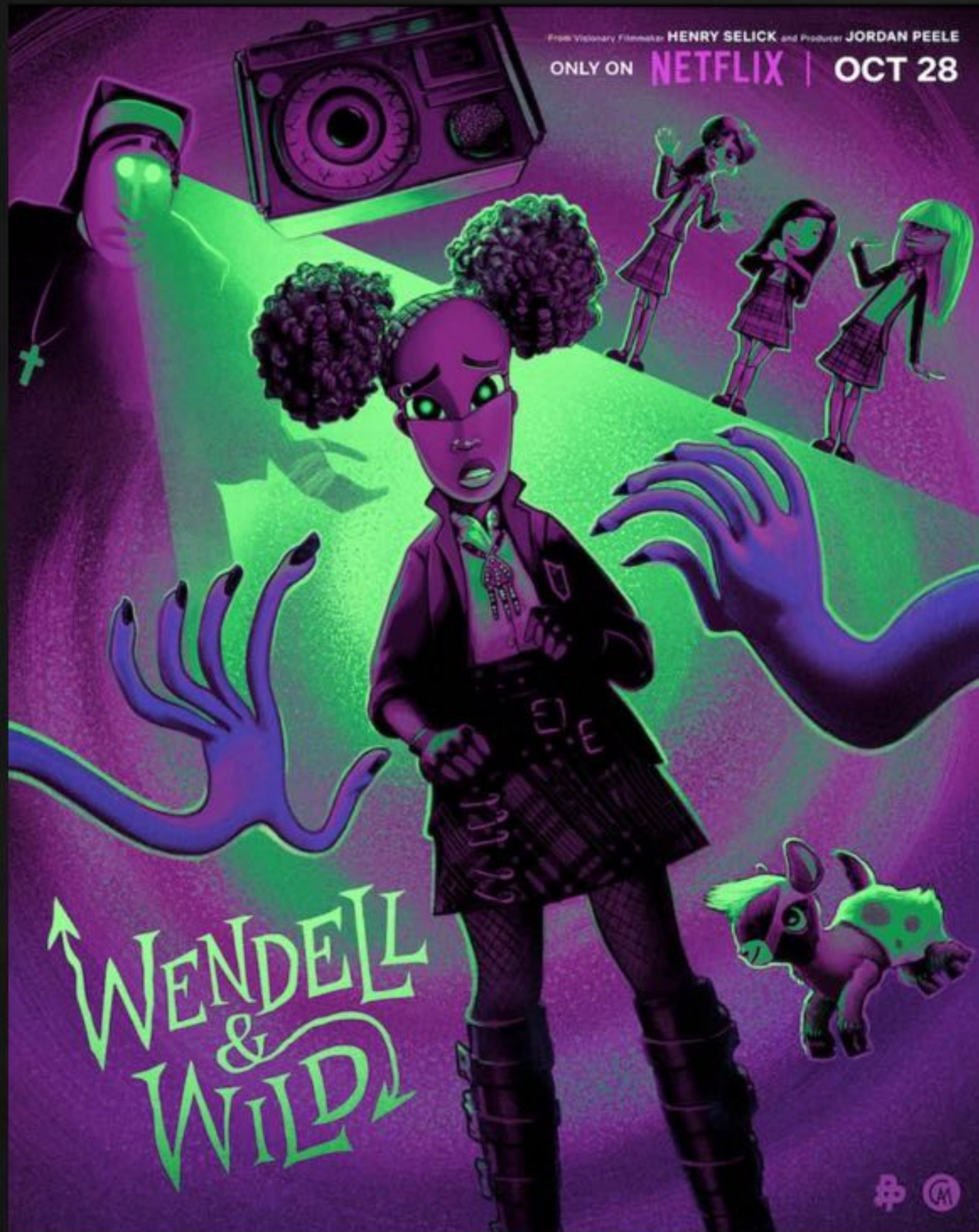
Will Elliot be able to complete the job?

# WHY I'M MAKING THIS FILM

## & WHY I'M THE PERSON TO DO IT!

1. I believe it is a good extension of my style that has a lot of room to build and explore it even further. It has a bigger scope with the longer run time which I feel really gives me room to play and develop visuals I'm naturally drawn to create with less limitation.
2. THE WORLD !!!!! I think there's so many opportunities to really flesh out the world not just through visuals but also sound and score. I also think this world will allow for interesting performance direction.
3. THE CHARACTERS! I love a good leading female badass. I want my main character to be cocky, stuck up, but also very determined and compelling. I think this type of female character isn't often explored. For how I imagine her performance currently, I'm super excited to see her go through her journey and explore her complexities through the run time. I also want to subvert the vampire troupe. For how I imagine her currently, she's not a terrifying villain but rather a scared girl who can't get out of the house.

# TONE CAMP, EERIE, MYSTICAL, SPOOKY, MYSTERIOUS



# TONE [CONT.]

→ ALL THESE FILMS ARE CAMPY, A BIT SILLY, & HAVE SPOOKY ASPECTS, BUT ARE ALSO VERY HEARTFELT & CONTAIN A MORE HUMAN QUALITY THAT TIES US TO THE CHARACTERS



W&W:  
DARK, SUBVERTED WORLD, A GIRL WHO EXPERIENCES THE PARANORMAL → BUT IS A MOVIE ABT GRIEF & FAMILY.

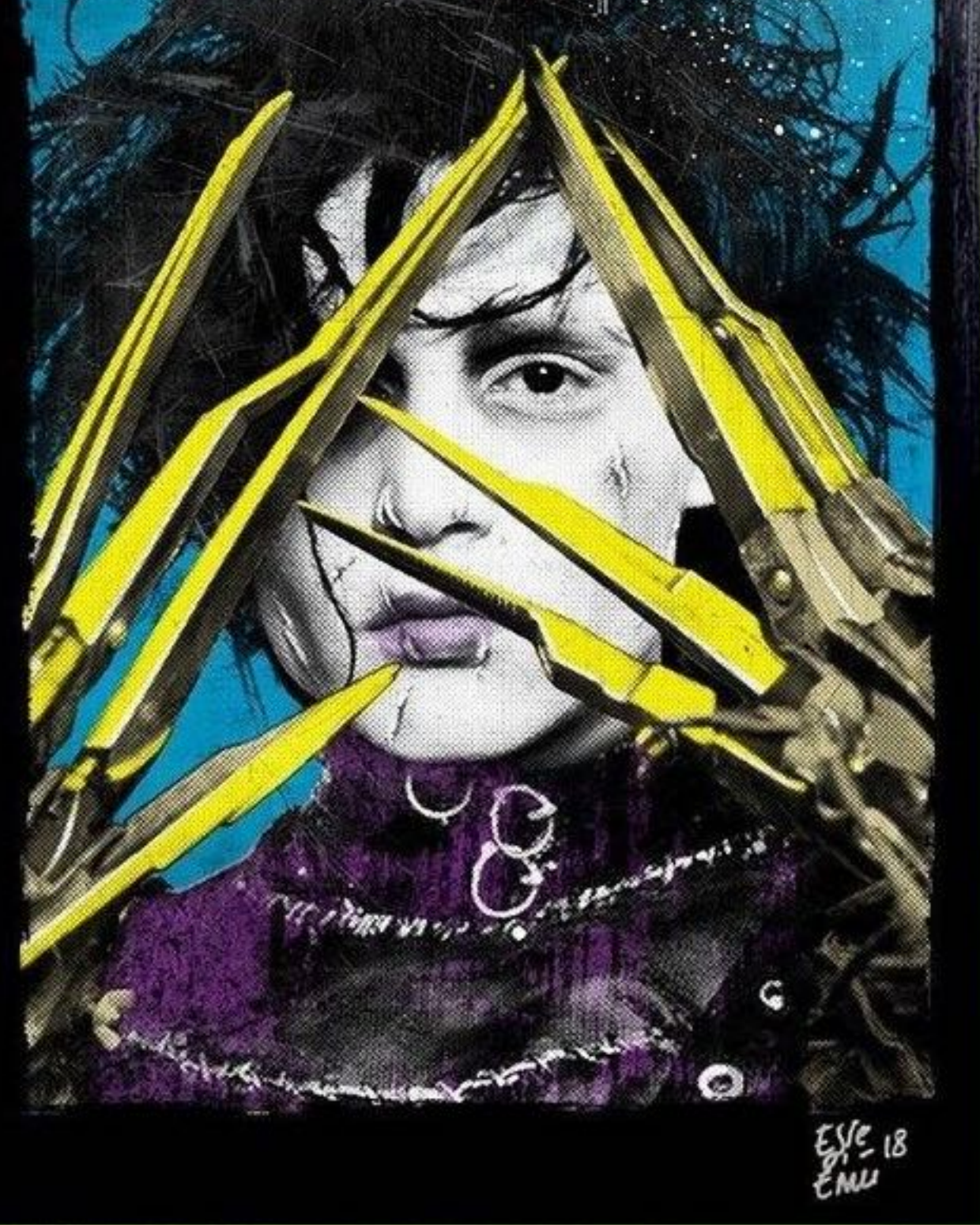
- KAT IS COCKY, LOUD, ABRASIVE AS A COPING MECHANISM

PARANORMAN: A BOY WHO'S 'NORMAL' IS PARANORMAL. A CAMPY FILM THAT HAS FUN WITH THE CHARACTERS BUT



HAS ITS HEART IN THEMES OF FORGIVENESS & SELF ACCEPTANCE. ALSO LOVE THIS FILM FOR PROP SHARP LANGUAGE.

## SCISSORHANDS



EDWARD: A PARANORMAL BOY HIMSELF. A GOOFY WORLD WITH GOOFY CHARACTERS, BUT ROOTED IN A STORY OF LOVE & COMING OF AGE.

# VISUAL STYLE

ENVIRONMENT &  
COLOR



LOVE THE  
COLOR  
QUALITY  
OF SCOOBY  
DOO'S  
BACKGROUNDS



HIGH CONTRAST W/  
VIBRANT COLORS & STOP MOTION VIBE

# VISUAL STYLE

[CHARACTERS]



LANKY  
DOLL-LIKE  
PROPORTIONS

GRIMY  
CLOTHING  
QUALITY

-WANT THEIR JOINTS  
TO BE SHOWN SIMILAR  
TO A DOLL / ACTION FIGURE



A CONTINUATION & EXPANSION OF MY  
OWN STYLE

↳ HEAVILY INSPIRED BY STOP MOTION  
PUPPETS. HAND PAINTED TEXTURES  
& HAND MADE CLOTHING



EMPLOYEE OF THE MONTH:

# ELLIOT

ELLIOT IS EXPERIENCED & SHE KNOWS IT...

↳ WITH A HIGH SUCCESS RECORD & PRAISE FROM HER SUPERIORS, ELLIOT HAS GROWN OVERLY CONFIDENT & A BIT COCKY.

BUT A BADASS NONE THE LESS





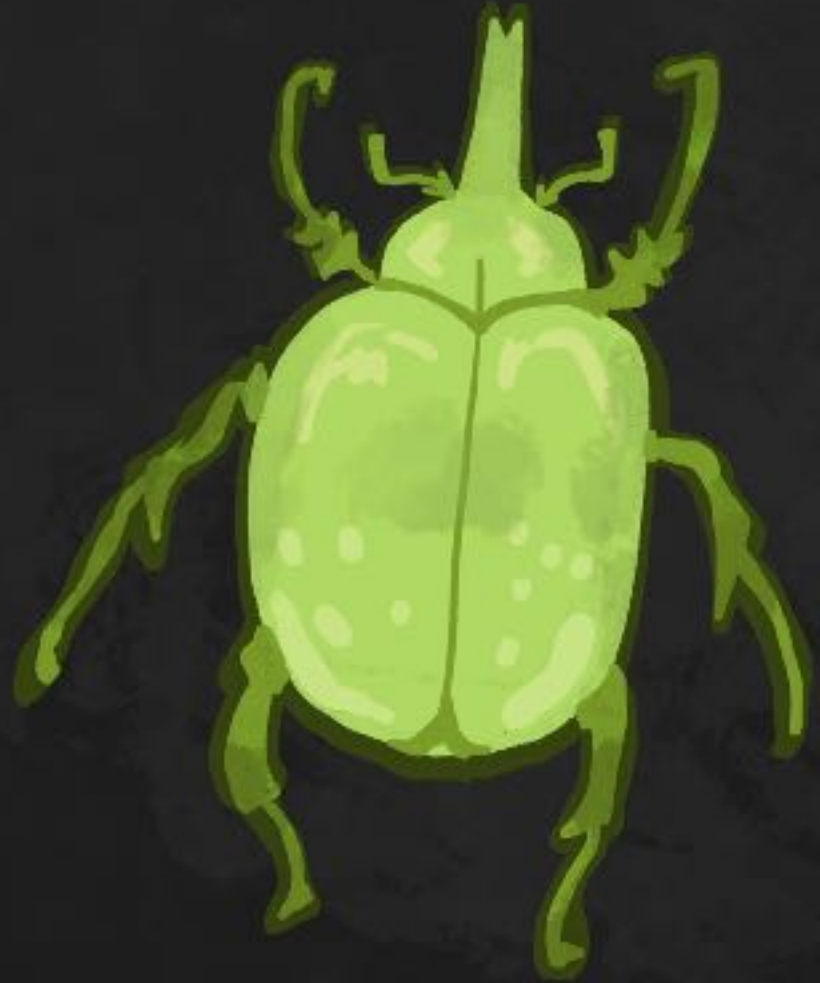
## ELLIOT



- 20s, Leo, 5'6
- Thrill Seeker, gets high off adrenalin rushes
- negative traits: loud, outspoken, cocky, abrasive, competitive
- positive traits: reliable, determined, empathetic, self-sufficient, loyal, confident
- conventionally weird, a girl's girl with odd tendencies - loves traditionally feminine things but isn't traditionally feminine in her mannerisms
- loves the power & control she feels when capturing & exterminating pests, loves a challenge, & loves getting her hands dirty

- facial scars were from a raccoon that had been hiding in a homeowner's walls, it had been chewing thru wires & had become super-naturally radio active. It put up a good fight, but Elliot put up a better one.

- Her co-workers think she's annoying. She's not only one of the few girls at the company, but also the youngest.



# CHARACTER INFO



# CHARACTER CONSTRUCTION



UNIFORM INSPO



MODELED/RIGGED  
SIMILAR TO ACTION  
FIGURE  
FOR JOINTS

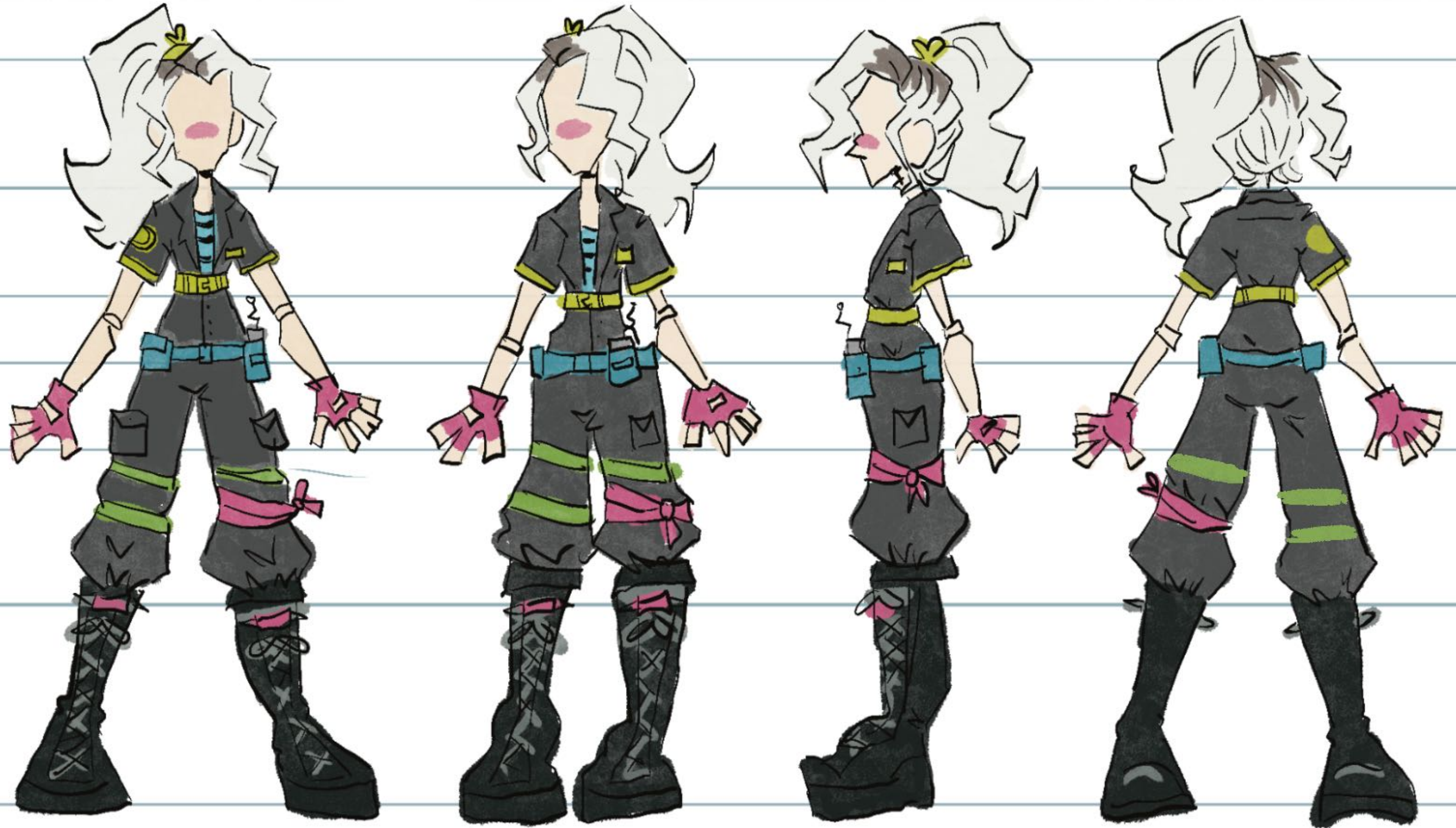


DOLL  
LIKE/  
STYLIZED  
PROPORTIONS

↳  
- SHE'S ADDED  
HER OWN  
FLARE TO HER  
UNIFORM



# ELLIOT TURNAROUND



# EXPRESSIONS



# LUCY

[THE BAT TRAPPED IN THE BASEMENT]

↳ YOUNG VAMPIRE LUCY IS JUST TRYING TO GROW INTO HER OWN WINGS WHEN SHE FINDS SHE HAS ACCIDENTIY TRAPPED HERSELF IN AN OLD STUFFY BASEMENT.

↳ SHE DOESN'T MEAN ANY HARM ↗ DOESN'T WANT TO RESORT TO USING HER FANGS



# CHARACTER CONSTRUCTION

2 MODELS NEEDED (AT LEAST)  
FOR CLOAKED LOOK & REGULAR  
NO CLOTH SIMS THO!



SHE IS HOODED/CLOAKED  
UP UNTIL THE  
ATTIC → WANT  
HER CLOAKED  
SIHOVETTE TO  
BE REMINICENT  
OF CLASSIC  
VAMPIRE  
CLOAKS → VERY  
FLOATY



LIKE ELLIOT, IN SPO  
FROM FASHION DOLLS  
FOR MODELLING →

UNDER THE CLOAK SHE'S  
JUST A CUTIE! WANT HER  
SKIN/HAIR COLOR TO BE  
JUXTAPOSED W/ HER CLOAK  
SIHOVETTE



# CHARACTER CONSTRUCTION

LIMITED  
MOVEMENT=  
LIMITED  
JOINTS



MAIN REF  
FOR JOINTS [CONT.]



↙ TWO MODELS  
WILL BE NEEDED → HOODED  
& UNHOODED / POST REVEAL →



# SHAPE LANGUAGE

THERE ARE NO STRAIGHT LINES HERE!!!



WONKY & STRETCHED





# HERO PROP: WALKIE

COPY!!

SIDE  
BUTTON  
FRONT  
VIEW



SIDE VIEW



BACK VIEW

TAPE LABEL

CLIP FOR  
SECURITY

STICKER



# HERO PROP: WEAPON

[FINAL DESIGN BY LAUREN BEST]

TOY EXAMPLES ↓



EX BASED IN REALITY: CAT TRAPS ↓

WOULD BE A PART OF THE C&E TOOL KIT, BUT EMBELLISHED BY ELLIOT

RAW WIRE

WOULD BE STICKER BOMBED



CHARGING PORT ↓

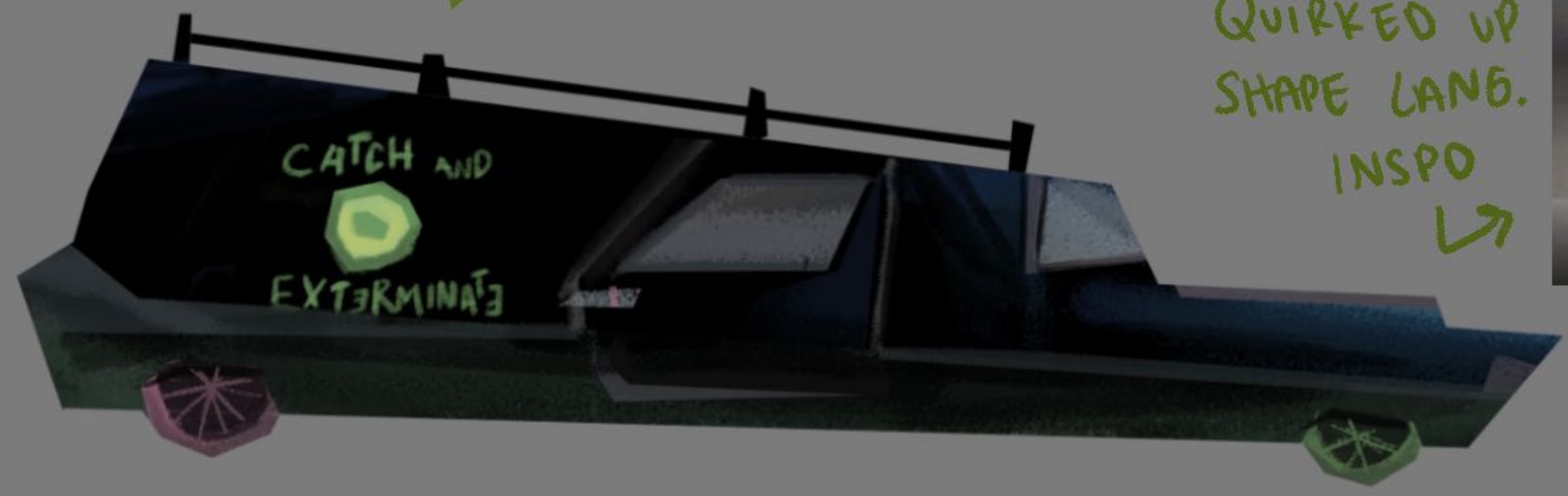


# THE C&E CAR

[FINAL DESIGN:  
MIA SUNDAY]



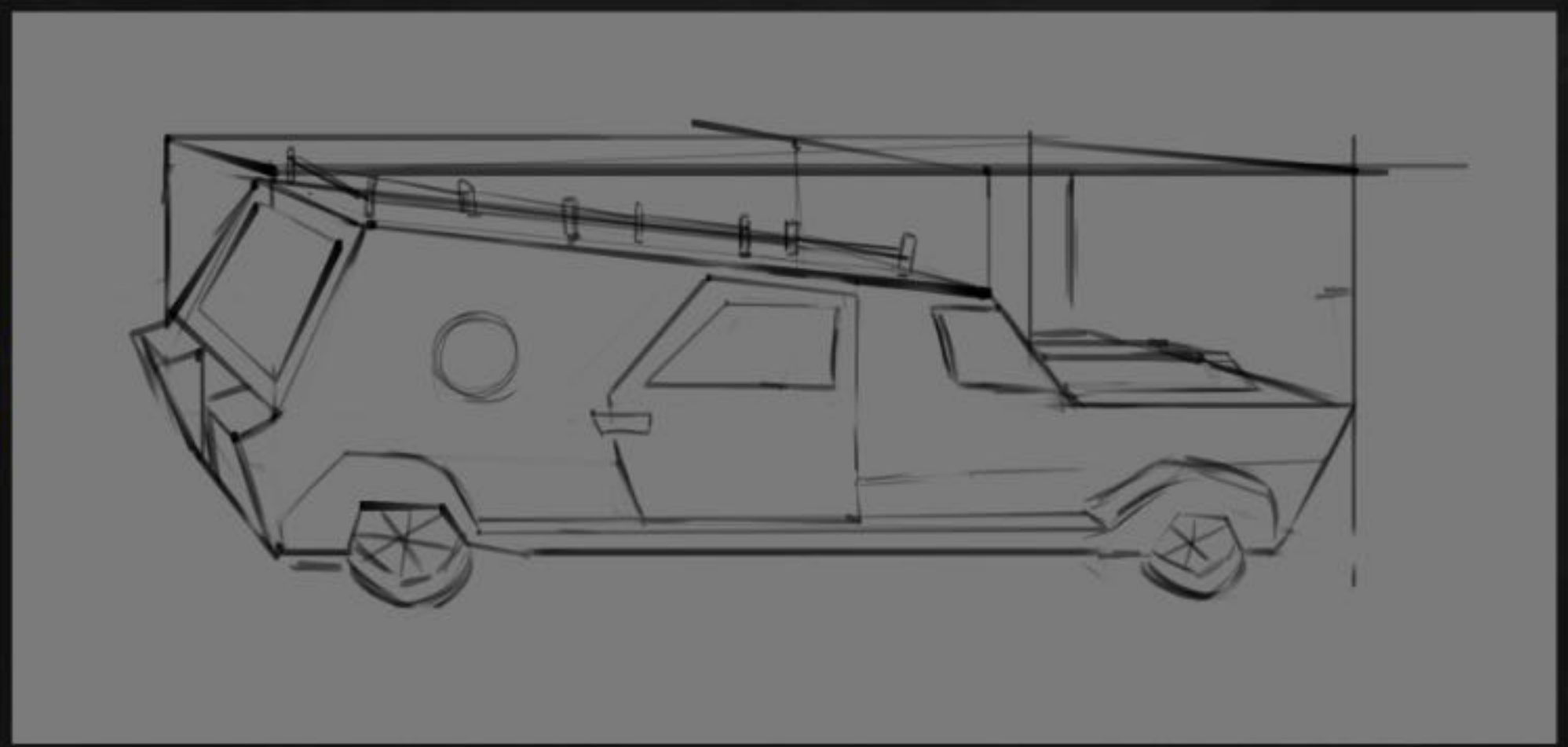
© 2012 LAIKA Inc.



QUIRKED UP  
SHAPE LANG.  
INSPO  
↳

## HEARSE VIBE

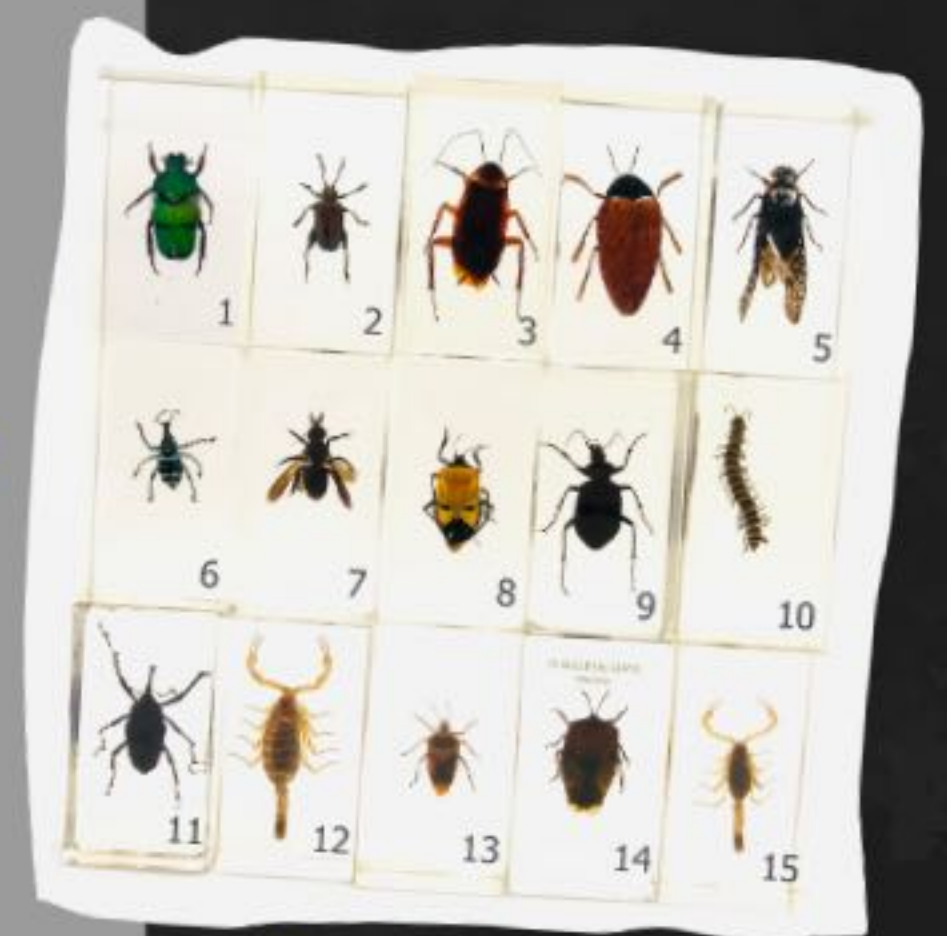
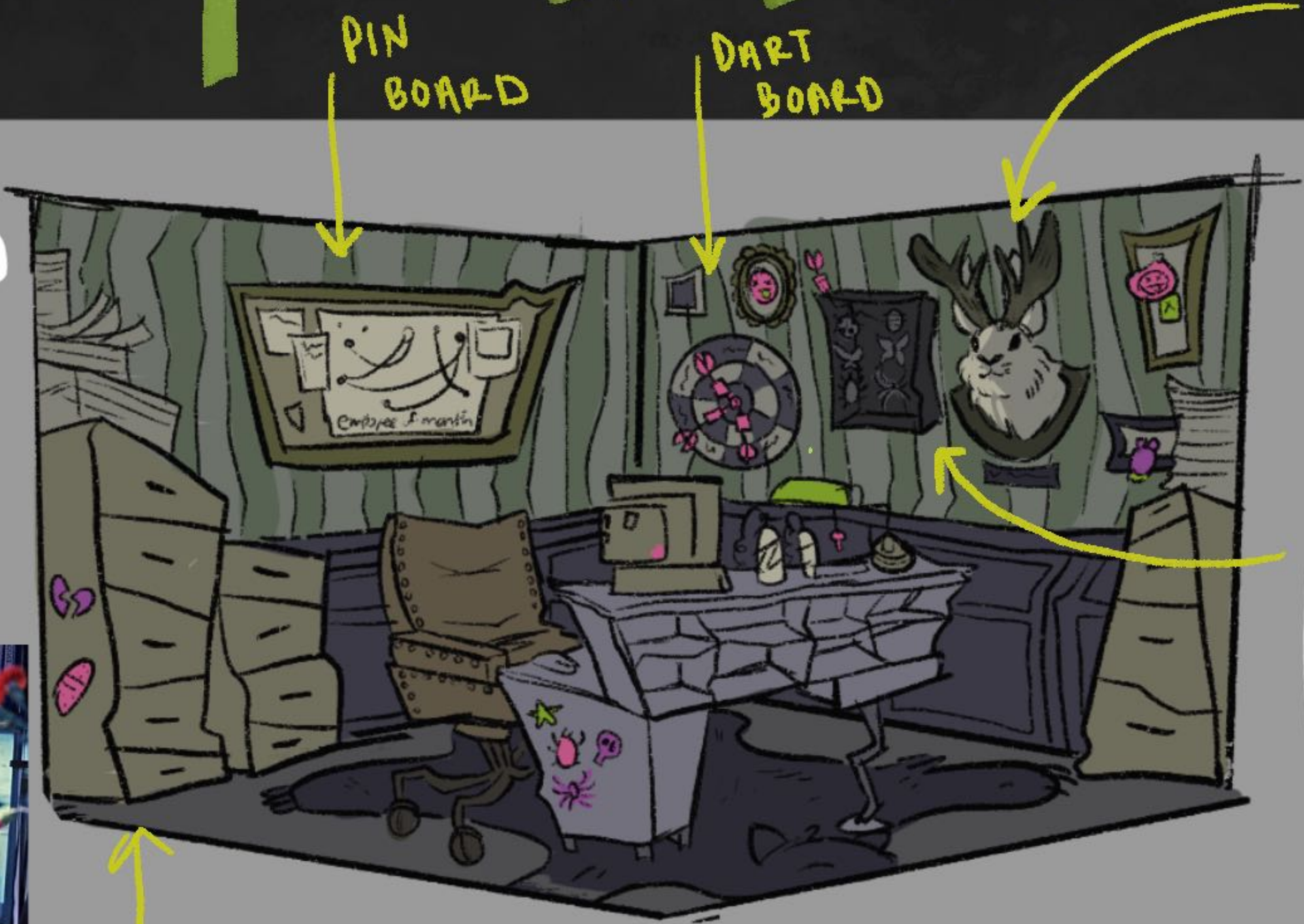
[WILL PROB JUST RETEXTURE/  
ALTER GEO OF A PRE-  
MADE HEARSE MODEL]



# SETS: CFE HQ [ELLIOT'S OFFICE]

ART BY KANSAS MCWHIRTER

REF FOR GENERAL SENSE OF CLUTTER



PAST CAPTURES



FILING CABINETS CLUTTERED, SAFETY HAZARDS, EMBELLISHED W/ HER PERSONALITY

# SETS: C&E HQ [ELLIOT'S DESK]

ART BY KANSAS MCWHIRTER



REPENIENT / OTHER GADGETS

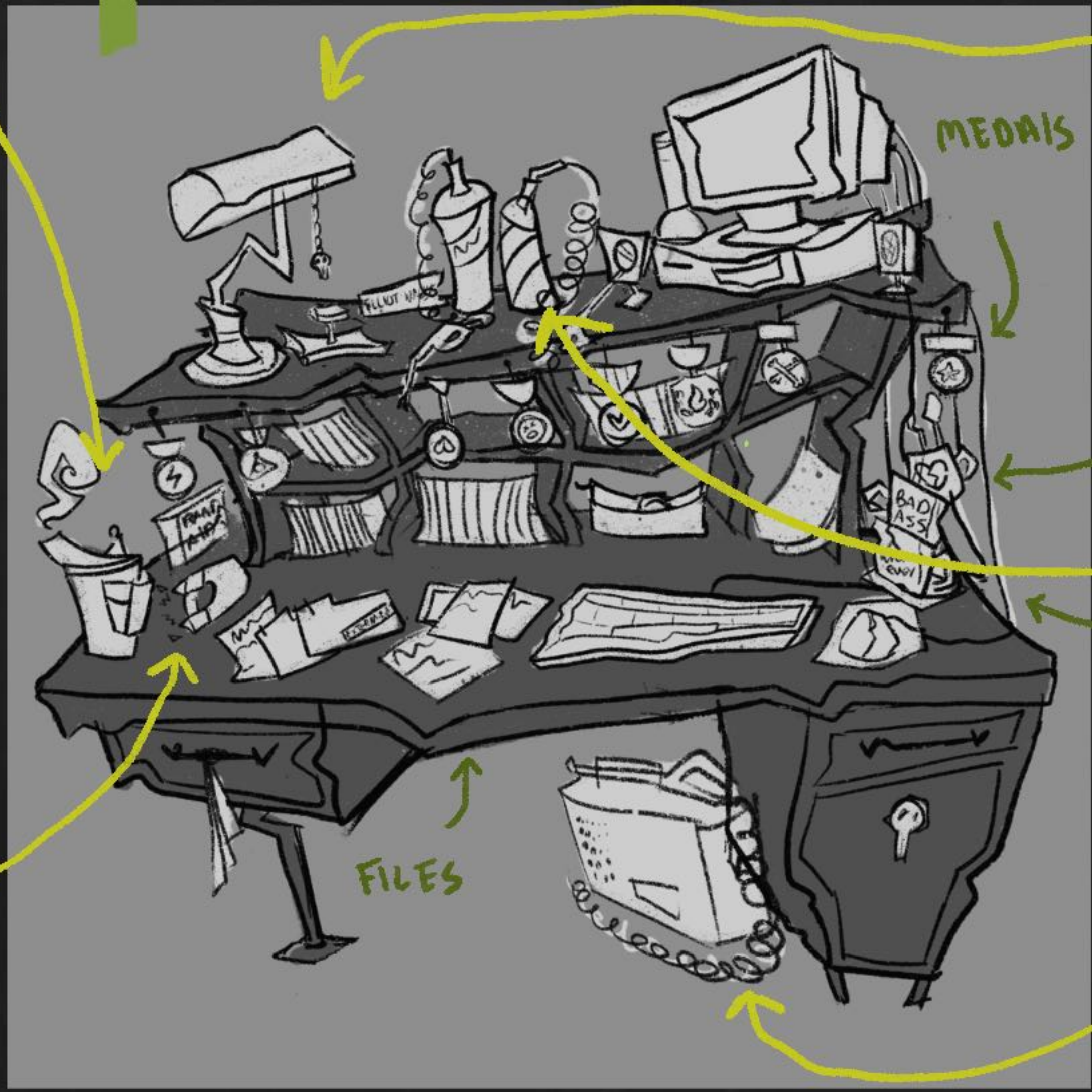


MUGS

RAW WIRES



PEST CONTROL WEAPONS



MEDALS

FILES

# SETS=BASEMENT

→ INCITING INCIDENT / STRUGGLE 1



DARK, HIGH  
CONTRAST,  
LIGHTING  
ACTING AS PD

-WANT IT TO HAVE A MAD SCIENTIST LAIR /  
TOURTURE CHAMBER TYPE OF FEEL

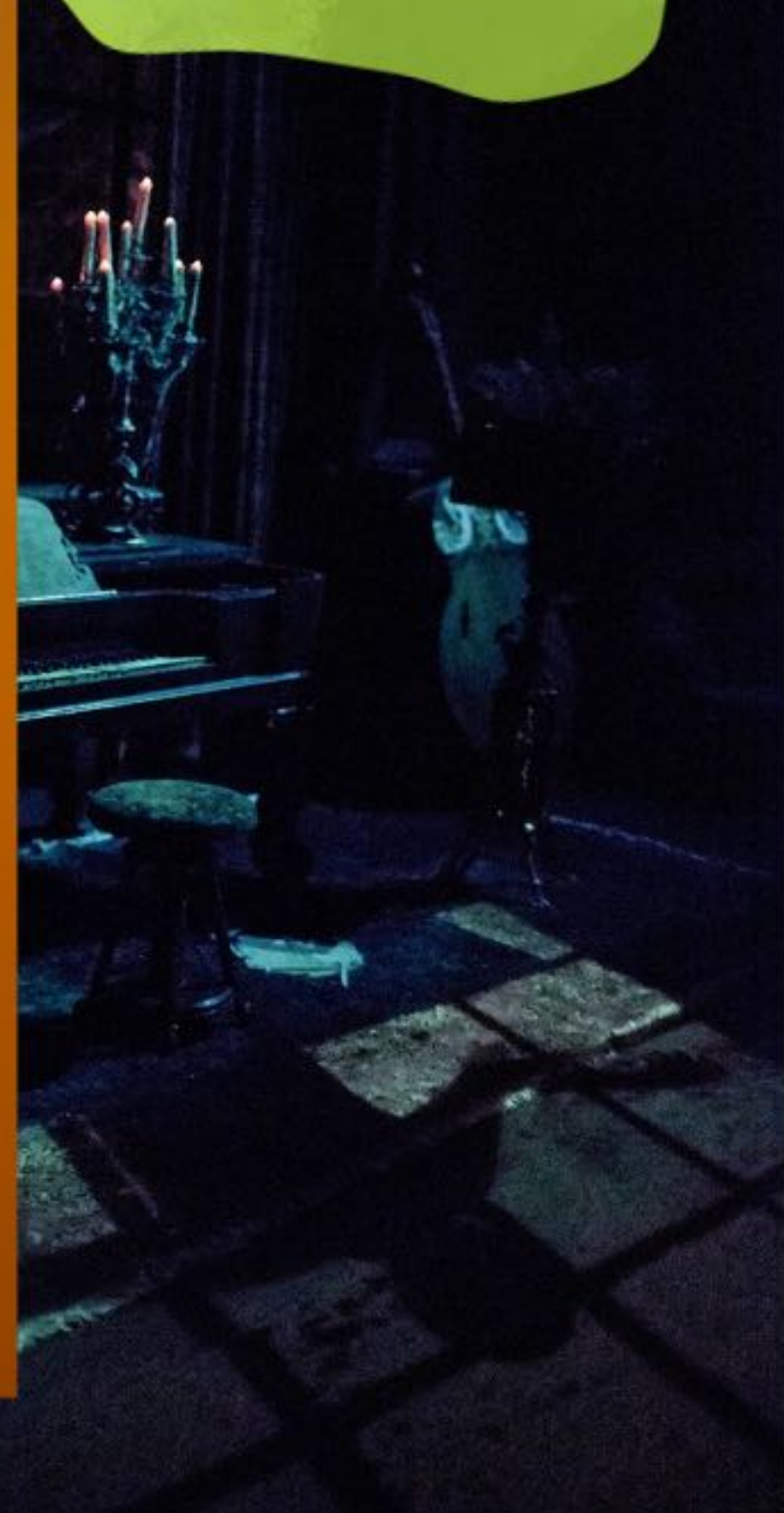
↳ GREENS, BIVES, POP OF PURPLE



# SETS: FOYER

SOUTHERN GOTHIC MANOR →  
DARK → DISNEY'S HAUNTED  
MANSION BUT NOT 'HAUNTED'

- MORE VINTAGE  
PIECES, SHARP  
ANGLES, VIBRANT  
PURPLES, BUES,  
POP OF PINK



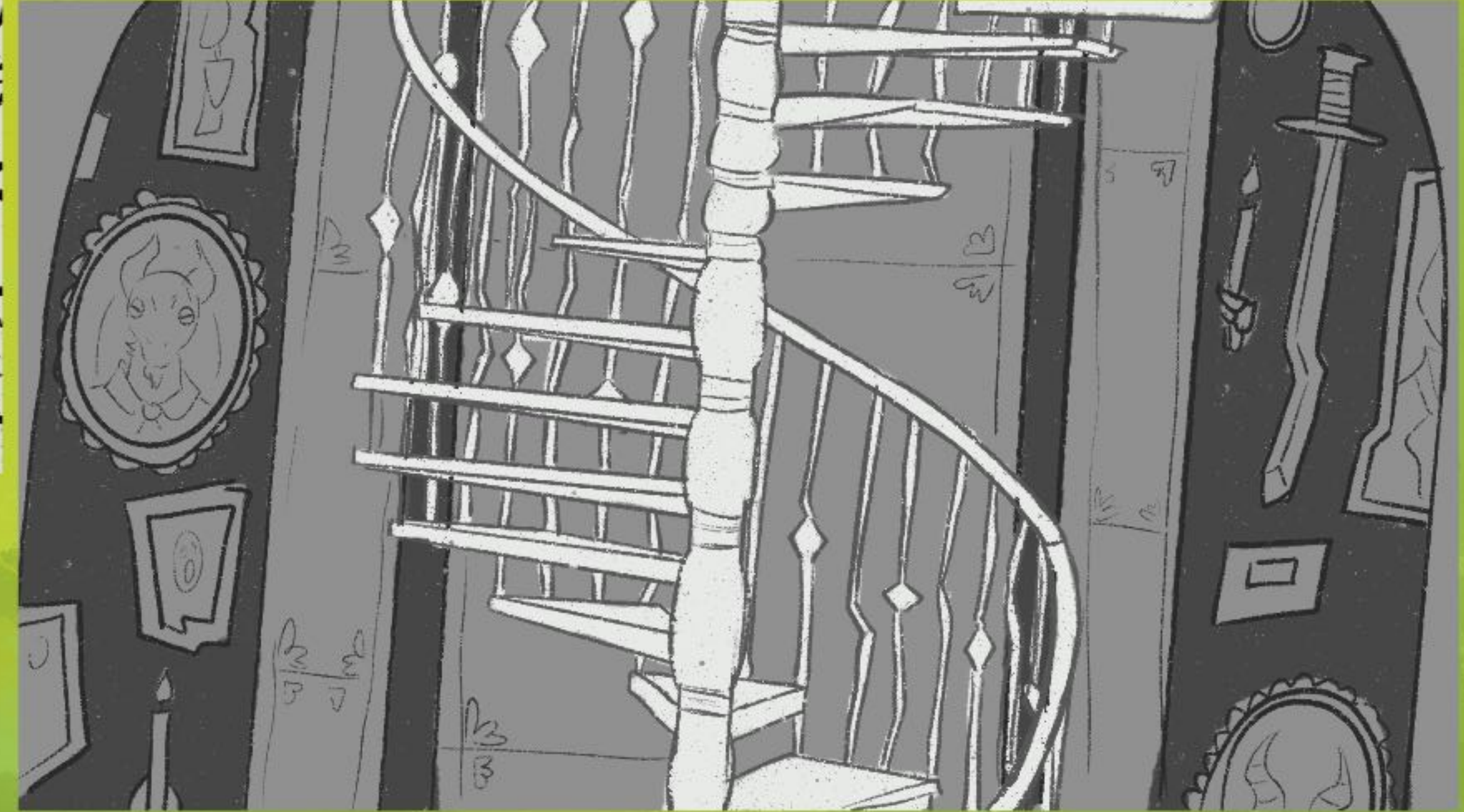
# SETS: FOYER (CONT.)

ART BY: KANSAS MCWHIRTER



COLLECTION OF  
ODDITIES CONT.

BIG STAINED GLASS  
WINDOWS



VARIETY OF  
UNIQUE RUGS

CABINET OF  
ODDITIES



# SETS: ATTIC

↳ TURNING POINT/  
CHOICE



- SOFTER, AIRY, DECENTLY EMPTY
- MUTED BIVES, POP OF SOFT GREENS

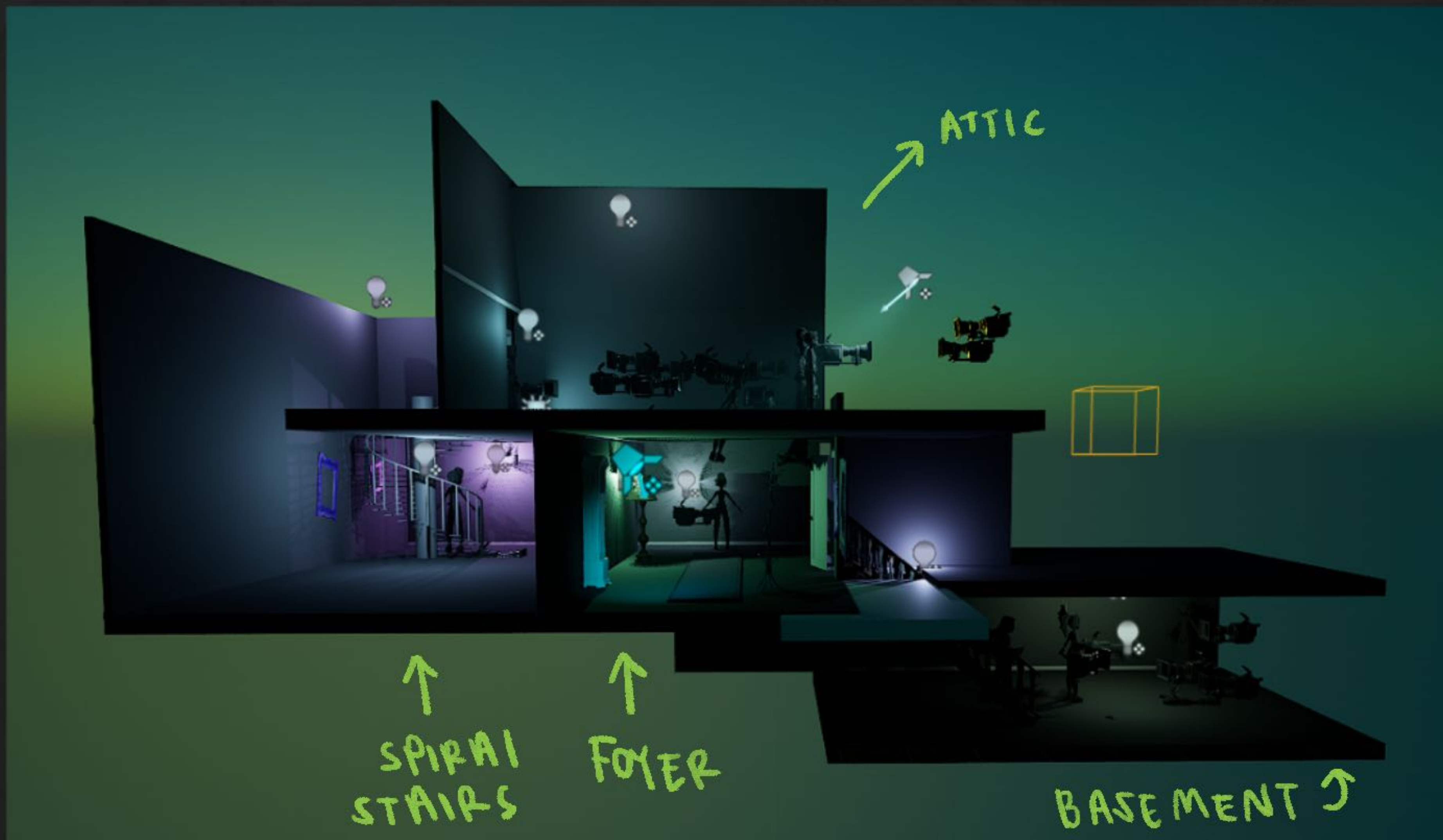


← WHERE WE SEE  
LUCKY FLY OFF  
INTO THE  
MOON LIGHT →

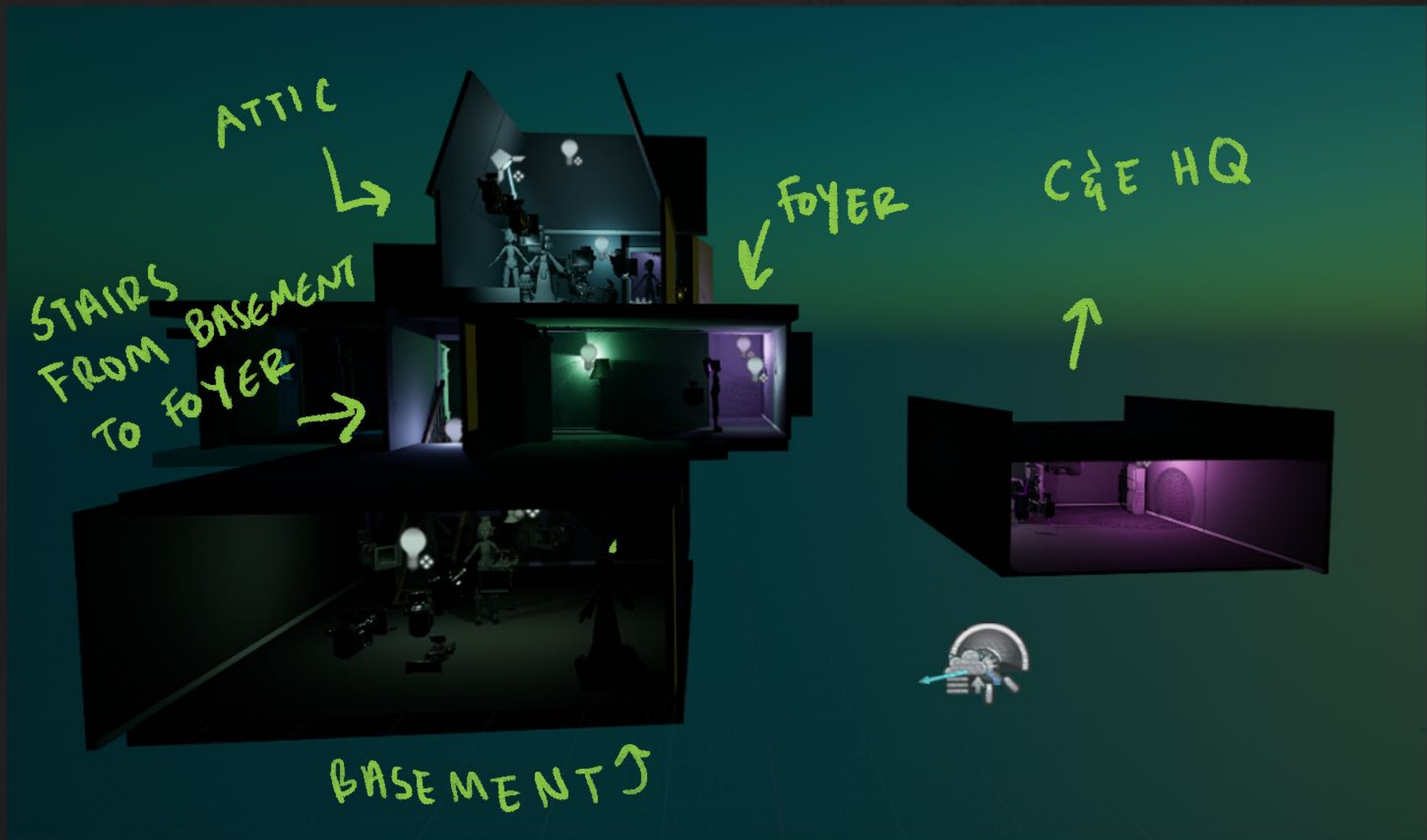


# SETS: BLACKOUT

SIDE VIEW



# SETS: BLACK OUT (CONT.) FRONT VIEW



PD

→ GENERAL PROP IDEAS OF  
HOW TO FILL THE SPACES. VICTORIAN/  
SOUTHERN GOTHIC BUT SUBVERTED  
IN SHAPE LANGUAGE & COLOR/TEXTURE



# PD CONT.

homeowner - hoarder / collector

lots of broken down victorian furniture piled in the empty attic, exquisite collection of art carefully stacked away for safekeeping



↑ OLD VICTORIAN FURNITURE



↙

OLD HAT BOXES / TRUNKS /

LUGGAGE

↙

GENERAL VIBE

↘



# GOLOR SCRIPT



NORMAL  
↳ GAUDY HUES, HIGH CONTRAST



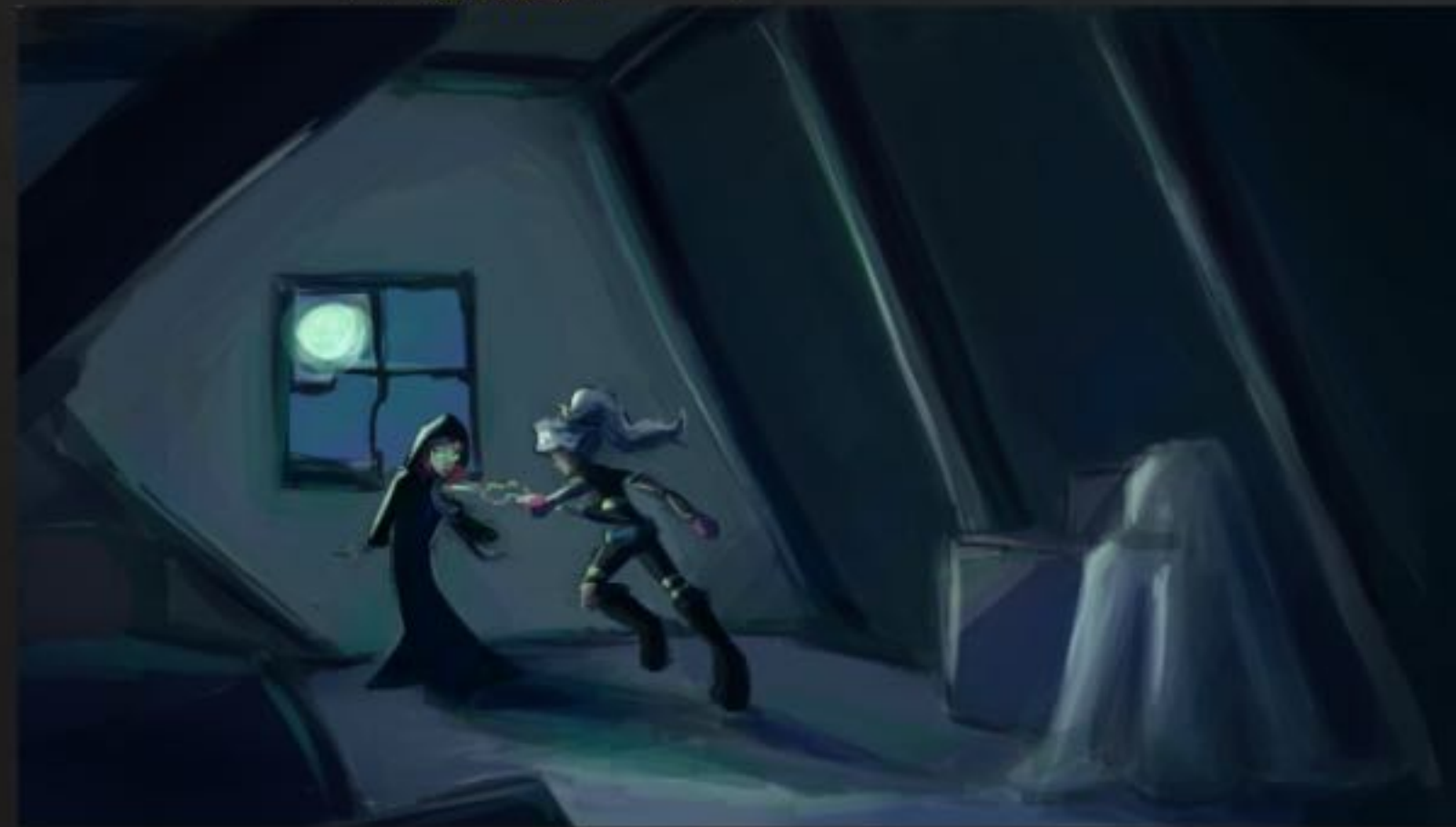
INCITING INCIDENT  
↳ HIGHEST CONTRAST



STRUGGLE ONE



STRUGGLE TWO



TURNING POINT  
↳ AIRY, WHIMSY, MYSTERY



NEW NORMAL  
↳ STILL DARK BUT DIFF PALETTE →  
WARMER HUES